

MCF2 Polyclonal Antibody

catalog number: **E-AB-64345**

Note: Centrifuge before opening to ensure complete recovery of vial contents.

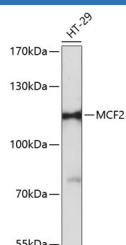
Description

Reactivity	Human; Mouse
Immunogen	Recombinant fusion protein of human MCF2 (NP_001165347.1).
Host	Rabbit
Isotype	IgG
Purification	Affinity purification
Buffer	Phosphate buffered solution, pH 7.4, containing 0.05% stabilizer and 50% glycerol.

Applications Recommended Dilution

WB	1:500-1:2000
-----------	--------------

Data



Western blot analysis of extracts of HT-29 cells using MCF2 Polyclonal Antibody at dilution of 1:3000.

Observed-MW: 108 kDa

Calculated-MW: 95 kDa/100 kDa/107 kDa/109 kDa/114 kDa/116 kDa

Preparation & Storage

Storage	Store at -20°C Valid for 12 months. Avoid freeze / thaw cycles.
Shipping	The product is shipped with ice pack, upon receipt, store it immediately at the temperature recommended.

Background

The oncogenic protein encoded by this gene is a guanine nucleotide exchange factor (GEF) that exerts control over some members of the Rho family of small GTPases. Several transcript variants encoding different isoforms have been found for this gene. These isoforms exhibit different expression patterns and varying levels of GEF activity.

For Research Use Only