

## LDHA Polyclonal Antibody

catalog number: D-AB-10210L

**Note:** Centrifuge before opening to ensure complete recovery of vial contents.

### Description

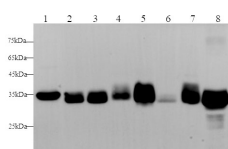
Reactivity	Human;Mouse;Rat
Immunogen	Recombinant Human LDHA protein expressed by E.coli
Host	Rabbit
Isotype	IgG
Purification	Antigen Affinity Purification
Conjugation	Unconjugated
Buffer	PBS with 0.05% Proclin300, 1% protective protein and 50% glycerol, pH7.4

### Applications

### Recommended Dilution

WB	1:2500-1:5000
IHC	1:200-1:400

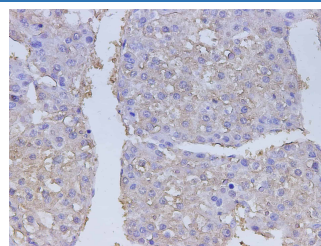
### Data



Western blot with LDHA Polyclonal antibody at dilution of 1:2500.lane 1:Hela whole cell lysate,lane 2:NIH/3T3 whole cell lysate,lane 3:Mouse kidney,lane 4:Mouse heart,lane 5:Mouse skeletal muscle,lane 6:Rat kidney,lane 7:Rat heart,lane 8:Rat skeletal muscle

**Observed-MW:36 kDa**

**Calculated-MW:26,30,36,39 kDa**



Immunohistochemistry of paraffin-embedded Human liver cancer using LDHA Polyclonal Antibody at dilution of 1:400

### Preparation & Storage

Storage	Store at -20°C Valid for 12 months. Avoid freeze / thaw cycles.
Shipping	The product is shipped with ice pack,upon receipt,store it immediately at the temperature recommended.

### Background

LDHA,also named as LDH-M and NY-REN-59,is an enzyme which catalyzes the inter-conversion of pyruvate and L-lactate with concomitant inter-conversion of NADH and NAD<sup>+</sup>. LDHA is found in most somatic tissues,though predominantly in muscle tissue and tumours,and belongs to the lactate dehydrogenase family. It has long been known that many human cancers have higher LDHA levels compared to normal tissues. It has also been shown that LDHA plays an important role in the development,invasion and metastasis of malignancies. Mutations in LDHA have been linked to exertional myoglobinuria. LDHA has some isoforms with MW 26-40 kDa.