

## Lysozyme Polyclonal Antibody

catalog number: E-AB-70213

**Note:** Centrifuge before opening to ensure complete recovery of vial contents.

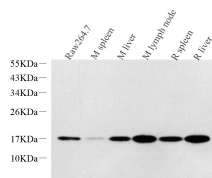
### Description

<b>Reactivity</b>	Mouse;Rat
<b>Immunogen</b>	KLH conjugated Synthetic peptide corresponding to Mouse Lysozyme
<b>Host</b>	Rabbit
<b>Isotype</b>	IgG
<b>Purification</b>	Affinity purification
<b>Buffer</b>	Phosphate buffered solution, pH 7.4, containing 0.05% stabilizer, 1% protein protectant and 50% glycerol.

### Applications

Applications	Recommended Dilution
<b>WB</b>	1:500-1:2000
<b>IHC</b>	1:300-1:800

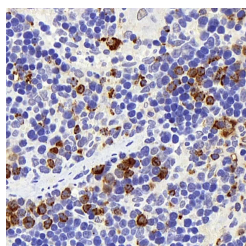
### Data



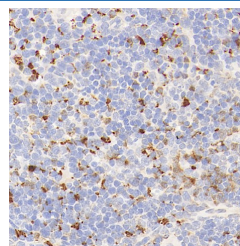
Western Blot analysis of various samples using Lysozyme Polyclonal Antibody at dilution of 1:1000.

**Observed-MW:17 kDa**

**Calculated-MW:17 kDa**



Immunohistochemistry analysis of paraffin-embedded rat spleen using Lysozyme Polyclonal Antibody at dilution of 1:400.



Immunohistochemistry analysis of paraffin-embedded mouse spleen using Lysozyme Polyclonal Antibody at dilution of 1:400.

### Preparation & Storage

<b>Storage</b>	Store at -20°C Valid for 12 months. Avoid freeze / thaw cycles.
<b>Shipping</b>	The product is shipped with ice pack, upon receipt, store it immediately at the temperature recommended.

### Background

### For Research Use Only

LYZ(Lysozyme C) is also named as LZM and belongs to the glycosyl hydrolase 22 family. It catalyzes the hydrolysis of the bacterial cell wall beta(1-4) glycosidic linkages between N-acetylmuramic acid and N-acetylglucosamine. In tissues and body fluids this protein is associated with the monocyte-macrophage system and enhance the activity of immunoagents. LYZ is capable of both hydrolysis and transglycosylation; it shows also a slight esterase activity. Defects in LYZ are a cause of amyloidosis type 8 (AMYL8). The full length protein has a signal peptide with 18 amino acid.

## For Research Use Only

Toll-free: 1-888-852-8623  
Web: [www.elabscience.com](http://www.elabscience.com)

Tel: 1-832-243-6086  
Email: [techsupport@elabscience.com](mailto:techsupport@elabscience.com)

Fax: 1-832-243-6017

Rev. V1.7