

Recombinant NPM1 Monoclonal Antibody

catalog number: **AN301612L**

Note: Centrifuge before opening to ensure complete recovery of vial contents.

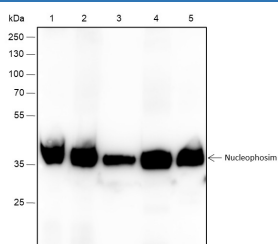
Description

Reactivity	Human;Rat;Mouse
Immunogen	Recombinant human NPM1 fragment
Host	Rabbit
Isotype	IgG, κ
Clone	A315
Purification	Protein A purified
Buffer	PBS, 50% glycerol, 0.05% Proclin 300, 0.05% protein protectant.

Applications Recommended Dilution

WB	1:500-1:2000
IHC	1:200-1:1000
IF	1:100-1:500
FCM	1:50-1:100

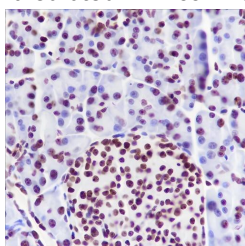
Data



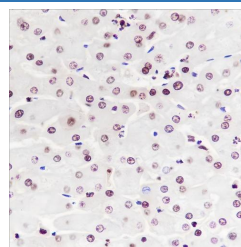
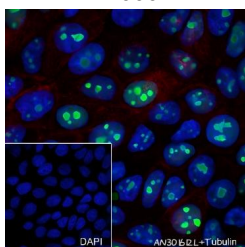
Western Blot with NPM1 Monoclonal Antibody at dilution of 1:2000. Lane 1: HeLa, Lane 2: Jurkat, Lane 3: MCF-7, Lane 4: NIH/3T3, Lane 5: PC-12

Observed-MW:37 kDa

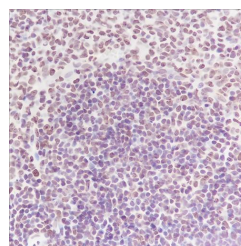
Calculated-MW:33 kDa



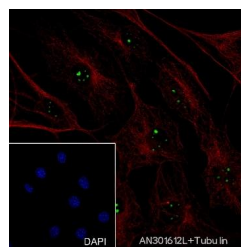
Immunohistochemistry of paraffin-embedded Mouse pancreas using NPM1 Monoclonal Antibody at dilution of 1:1000.



Immunohistochemistry of paraffin-embedded Human liver using NPM1 Monoclonal Antibody at dilution of 1:1000.



Immunohistochemistry of paraffin-embedded Rat spleen using NPM1 Monoclonal Antibody at dilution of 1:1000.



For Research Use Only

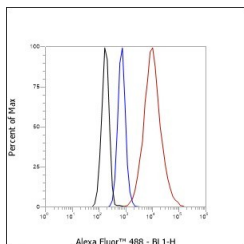
Toll-free: 1-888-852-8623
Web: www.elabscience.com

Tel: 1-832-243-6086
Email: techsupport@elabscience.com

Fax: 1-832-243-6017

Rev. V1.0

Immunofluorescent analysis of (4% Paraformaldehyde) fixed MCF-7 cells using anti-NPM1 Monoclonal Antibody at dilution of 1:500. Immunofluorescent analysis of (4% Paraformaldehyde) fixed NIH/3T3 cells using anti-NPM1 Monoclonal Antibody at dilution of 1:500.



Flow cytometric analysis of human NPM1 expression on Hela cells. Cells were stained with purified anti-Human NPM1, then a Alexa Fluor 488-conjugated second step antibody. The histogram were derived from events with the forward and side light-scatter characteristics of intact cells.

Preparation & Storage

Storage Store at -20°C Valid for 12 months. Avoid freeze / thaw cycles.

Shipping Ice bag

Background

Involved in diverse cellular processes such as ribosome biogenesis, centrosome duplication, protein chaperoning, histone assembly, cell proliferation, and regulation of tumor suppressors p53/TP53 and ARF. Binds ribosome presumably to drive ribosome nuclear export. Associated with nucleolar ribonucleoprotein structures and bind single-stranded nucleic acids. Acts as a chaperonin for the core histones H3, H2B and H4. Stimulates APEX1 endonuclease activity on apurinic/apyrimidinic (AP) double-stranded DNA but inhibits APEX1 endonuclease activity on AP single-stranded RNA. May exert a control of APEX1 endonuclease activity within nucleoli devoted to repair AP on rDNA and the removal of oxidized rRNA molecules. In concert with BRCA2, regulates centrosome duplication. Regulates centriole duplication: phosphorylation by PLK2 is able to trigger centriole replication. Negatively regulates the activation of EIF2AK2/PKR and suppresses apoptosis through inhibition of EIF2AK2/PKR autophosphorylation. Antagonizes the inhibitory effect of ATF5 on cell proliferation and relieves ATF5-induced G2/M blockade. In complex with MYC enhances the transcription of MYC target genes.

For Research Use Only

Toll-free: 1-888-852-8623
Web: www.elabscience.com

Tel: 1-832-243-6086
Email: techsupport@elabscience.com

Fax: 1-832-243-6017

Rev. V1.0