

## Recombinant Human COL21A1 Protein (His Tag)

**Catalog Number:** PKSH033712

**Note:** Centrifuge before opening to ensure complete recovery of vial contents.

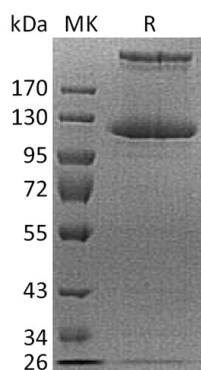
### Description

|                      |   |
|----------------------|---|
| <b>Species</b>       | Human   |
| <b>Source</b>        | HEK293 Cells-derived Human COL21A1 protein Glu23-Tyr957, with an C-terminal His |
| <b>Calculated MW</b> | 97.9 kDa  |
| <b>Observed MW</b>   | 115-125&220 kDa   |
| <b>Accession</b>     | Q96P44  |
| <b>Bio-activity</b>  | Not validated for activity  |

### Properties

|                       |  |
|-----------------------|--|
| <b>Purity</b>         | > 95 % as determined by reducing SDS-PAGE.   |
| <b>Endotoxin</b>      | < 1.0 EU per µg of the protein as determined by the LAL method.  |
| <b>Storage</b>        | Generally, lyophilized proteins are stable for up to 12 months when stored at -20 to -80°C. Reconstituted protein solution can be stored at 4-8°C for 2-7 days. Aliquots of reconstituted samples are stable at < -20°C for 3 months.            |
| <b>Shipping</b>       | This product is provided as lyophilized powder which is shipped with ice packs.  |
| <b>Formulation</b>    | Lyophilized from a 0.2 µm filtered solution of PBS, pH 7.4.<br>Normally 5% - 8% trehalose, mannitol and 0.01% Tween 80 are added as protectants before lyophilization.<br>Please refer to the specific buffer information in the printed manual. |
| <b>Reconstitution</b> | Please refer to the printed manual for detailed information.   |

### Data



> 95 % as determined by reducing SDS-PAGE.

### Background

Collagen  $\alpha$ -1(XI) Chain (COL21A1) is a member of the fibril-associated collagens with interrupted helices (FACIT) family. COL21A1 is a secreted protein and contains six collagen-like domains, one TSP N-terminal (TSPN) domain, and one VWFA domain. COL21A1 is widely expressed in many tissues with the highest expression observed at the fetal stage. COL21A1 is stimulated by PDGF/platelet-derived growth factor. Type XXI collagen is localized to tissues containing type I collagen; it may serve to maintain the integrity of the extracellular matrix.

### For Research Use Only