

# HRP-conjugated beta actin Monoclonal Antibody

catalog number: AN00295HP

**Note:** Centrifuge before opening to ensure complete recovery of vial contents.

## Description

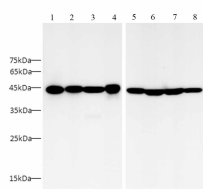
|                     |  |
|---------------------|--|
| <b>Reactivity</b>   | Human;Mouse;Rat  |
| <b>Immunogen</b>    | Recombinant human Beta actin protein by E. Coli                          |
| <b>Host</b>         | Mouse  |
| <b>Isotype</b>      | IgG1   |
| <b>Clone</b>        | 3A9  |
| <b>Purification</b> | Protein A/G Purification   |
| <b>Conjugation</b>  | HRP  |
| <b>buffer</b>       | PBS with 0.05% proclin 300, 1% protective protein and 50% glycerol,pH7.4 |

## Applications

## Recommended Dilution

|           |               |
|-----------|---------------|
| <b>WB</b> | 1:2500-1:5000 |
|-----------|---------------|

## Data



Western blot with HRP-conjugated beta actin Monoclonal

Antibody at dilution of 1:5000.lane 1:Raji whole cell lysate,lane 2:Jurkat whole cell lysate, lane 3:HL-60 whole cell lysate,lane 4:U87-MG whole cell lysate,lane 5:mouse lung whole cell lysate,lane 6:rat lung whole cell lysate,lane 7:Raw264.7 whole cell lysate,lane 8:C6 whole cell lysate

**Observed-MV:43 kDa**

**Calculated-MV:43 kDa**

## Preparation & Storage

**Storage** Store at -20°C Valid for 12 months. Avoid freeze / thaw cycles. Protected from prolonged exposure to light.

**Shipping** The product is shipped with ice pack,upon receipt,store it immediately at the temperature recommended.

## Background

Beta-actin (ACTB/ACTB) is one of six different actin isoforms in humans. Actins are highly conserved proteins that are involved in cell motility,structure and integrity. Beta actin is a major constituent of the contractile apparatus and one of the two nonmuscle cytoskeletal actins. Beta-actin gene is stably and constitutively expressed at high levels in most tissues and cells,and commonly used as a loading control for western blot and as a control for qPCR.

## For Research Use Only