

VTI1B Polyclonal Antibody

catalog number: E-AB-52425

Note: Centrifuge before opening to ensure complete recovery of vial contents.

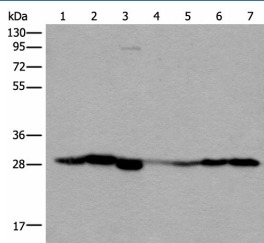
Description

Reactivity	Human;Mouse;Rat
Immunogen	Full length fusion protein
Host	Rabbit
Isotype	IgG
Purification	Antigen affinity purification
Buffer	Phosphate buffered solution, pH 7.4, containing 0.05% stabilizer and 50% glycerol.

Applications

Applications	Recommended Dilution
WB	1:500-1:2000
IHC	1:25-1:100

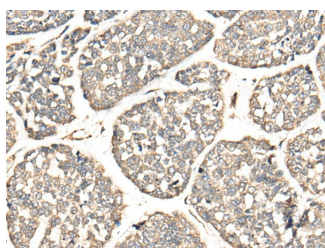
Data



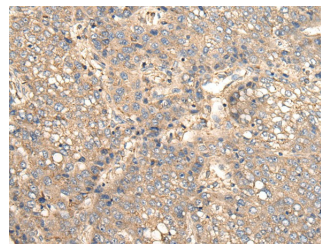
Western blot analysis of Human kidney tissue RAW264.7 cell Mouse kidney tissue Human lung tissue Human fetal liver tissue Hela and 231 cell lysates using VTI1B Polyclonal Antibody at dilution of 1:300

Observed-MW:Refer to figures

Calculated-MW:27 kDa



Immunohistochemistry of paraffin-embedded Human esophagus cancer tissue using VTI1B Polyclonal Antibody at dilution of 1:30(×200)



Immunohistochemistry of paraffin-embedded Human liver cancer tissue using VTI1B Polyclonal Antibody at dilution of 1:30(×200)

Preparation & Storage

Storage	Store at -20°C Valid for 12 months. Avoid freeze / thaw cycles.
Shipping	The product is shipped with ice pack,upon receipt,store it immediately at the temperature recommended.

Background

For Research Use Only

VTI1B (Vesicle Transport Through Interaction With T-SNAREs 1B) is a Protein Coding gene. Diseases associated with VTI1B include Hypomyelinating Leukodystrophy. Among its related pathways are wtCFTR and deltaF508 traffic / Late endosome and Lysosome (normal and CF) and Response to elevated platelet cytosolic Ca²⁺. Gene Ontology (GO) annotations related to this gene include SNARE binding and chloride channel inhibitor activity. An important paralog of this gene is VTI1A.

For Research Use Only

Toll-free: 1-888-852-8623
Web: www.elabscience.com

Tel: 1-832-243-6086
Email: techsupport@elabscience.com

Fax: 1-832-243-6017

Rev. V1.8