

## CARTPT Polyclonal Antibody

**catalog number: E-AB-67332**

**Note:** Centrifuge before opening to ensure complete recovery of vial contents.

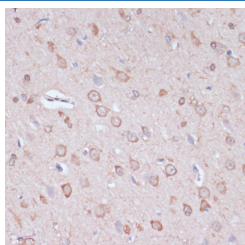
### Description

<b>Reactivity</b>	Human;Mouse;Rat
<b>Immunogen</b>	Recombinant protein of human CARTPT.
<b>Host</b>	Rabbit
<b>Isotype</b>	IgG
<b>Purification</b>	Affinity purification
<b>Buffer</b>	Phosphate buffered solution, pH 7.4, containing 0.05% stabilizer and 50% glycerol.

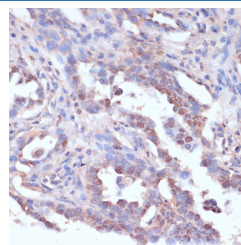
### Applications Recommended Dilution

<b>IHC</b>	1:50-1:200
------------	------------

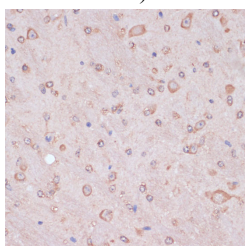
### Data



Immunohistochemistry of paraffin-embedded Rat brain using CARTPT Polyclonal Antibody at dilution of 1:100 (40x lens).



Immunohistochemistry of paraffin-embedded Human lung cancer using CARTPT Polyclonal Antibody at dilution of 1:100 (40x lens).



Immunohistochemistry of paraffin-embedded Mouse brain using CARTPT Polyclonal Antibody at dilution of 1:100 (40x lens).

### Preparation & Storage

<b>Storage</b>	Store at -20°C Valid for 12 months. Avoid freeze / thaw cycles.
<b>Shipping</b>	The product is shipped with ice pack, upon receipt, store it immediately at the temperature recommended.

### Background

This gene encodes a secreted protein which is processed by prohormone/proprotein convertases to produce smaller, biologically active peptides. Expression of the transcript for this gene is regulated by certain drugs such as cocaine, and the encoded protein is thought to be involved in the regulation of appetite and stress. Mutations in this gene are associated with susceptibility to obesity.

### For Research Use Only