

## SAMD3 Polyclonal Antibody

catalog number: E-AB-15376

**Note:** Centrifuge before opening to ensure complete recovery of vial contents.

### Description

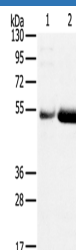
<b>Reactivity</b>	Human
<b>Immunogen</b>	Recombinant protein of human SAMD3
<b>Host</b>	Rabbit
<b>Isotype</b>	IgG
<b>Purification</b>	Affinity purification
<b>Conjugation</b>	Unconjugated
<b>Buffer</b>	Phosphate buffered solution, pH 7.4, containing 0.05% stabilizer and 50% glycerol.

### Applications

### Recommended Dilution

<b>WB</b>	1:500-1:2000
-----------	--------------

### Data



Western Blot analysis of Human placenta and stomach cancer tissue using SAMD3 Polyclonal Antibody at dilution of 1:400

**Calculated-MW:61 kDa**

### Preparation & Storage

<b>Storage</b>	Store at -20°C Valid for 12 months. Avoid freeze / thaw cycles.
<b>Shipping</b>	The product is shipped with ice pack, upon receipt, store it immediately at the temperature recommended.

### Background

The sterile alpha motif (SAM) domain is a 70 residue structure found in a large number of proteins involved in diverse processes present throughout the eukaryotes. The SAM domain is known to bind RNA and is arranged in a small five-helix bundle with two large interfaces. There are three isoforms of SAMD3 produced by alternative splicing. The isoform 1 has been chosen as the canonical sequence. All positional information in this entry refers to it. The sequence of isoform 2 differs from the canonical sequence as follows: 219-221: FLW → AGV; 222-520: Missing. And the sequence of isoform 3 differs from the canonical sequence as follows: 1-1: M → MRSSKLQSPSPSQEKQGCVYLQETAM.