

Recombinant Human IL27Ra/TCCR/WSX1 Protein (Fc Tag)

Catalog Number: PKSH031571

Note: Centrifuge before opening to ensure complete recovery of vial contents.

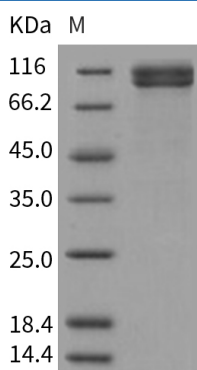
Description

Species	Human
Source	HEK293 Cells-derived Human IL27Ra/TCCR/WSX1 protein Met 1-Arg 514, with an C-terminal hFc
Calculated MW	79.0 kDa
Observed MW	105-115 kDa
Accession	NP_004834.1
Bio-activity	Immobilized human IL27 at 20 µg/ml (100 µl/well) can bind human IL27Ra with a linear ranger of 0.064-1. 6 µg/ml.

Properties

Purity	> 95 % as determined by reducing SDS-PAGE.
Endotoxin	< 1.0 EU per µg of the protein as determined by the LAL method.
Storage	Generally, lyophilized proteins are stable for up to 12 months when stored at -20 to -80 °C. Reconstituted protein solution can be stored at 4-8°C for 2-7 days. Aliquots of reconstituted samples are stable at < -20°C for 3 months.
Shipping	This product is provided as lyophilized powder which is shipped with ice packs.
Formulation	Lyophilized from sterile PBS, pH 7.4, 8% trehalose, 8% mannitol Normally 5% - 8% trehalose, mannitol and 0.01% Tween 80 are added as protectants before lyophilization. Please refer to the specific buffer information in the printed manual.
Reconstitution	Please refer to the printed manual for detailed information.

Data



> 95 % as determined by reducing SDS-PAGE.

Background

For Research Use Only

The interleukin-27 receptor is a type I cytokine receptor for interleukin-27. It is a heterodimer composed of the interleukin 27 receptor, alpha subunit and glycoprotein 130. WSX-1/IL-27R, a class I cytokine receptor that is homologous to the $\beta 2$ chain of the IL-12R in both sequence and structure, is highly expressed by resting/naive CD4⁺ T cells and CD8⁺ T cells. WSX-1/IL-27R belongs to the IL-6/IL-12 family of cytokines and induced proliferation of naive CD4(+) T cells and the generation of a Th1-type adaptive immune response. WSX-1/IL-27R functions as a receptor for IL27. IL-27 not only contributes to the development of an adaptive immune response through its action on CD4(+) T cells, it also directly acts on cells of the innate immune system. WSX-1/IL-27R requires IL6ST/gp130 to mediate signal transduction in response to IL27. This signaling system acts through STAT3 and STAT1. It is involved in the regulation of Th1-type immune responses. IL-27R also appears to be involved in innate defense mechanisms. IL27RA is essential for transcriptional activation of STAT1 and for augmenting the induction of T-bet expression during initiation of Th1 cell differentiation.