

## VCAM-1/CD106 Polyclonal Antibody(Capture/Detector)

catalog number: AN000920P

**Note:** Centrifuge before opening to ensure complete recovery of vial contents.

### Description

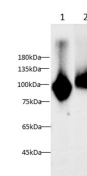
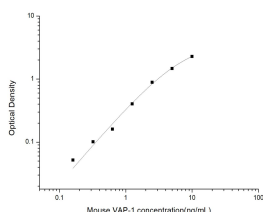
<b>Reactivity</b>	Mouse;Rat
<b>Immunogen</b>	Recombinant Mouse VCAM-1/CD106 protein expressed by Mammalian
<b>Host</b>	Rabbit
<b>Isotype</b>	Rabbit IgG
<b>Purification</b>	Antigen Affinity Purification
<b>Conjugation</b>	Unconjugated
<b>Buffer</b>	Phosphate buffered solution, pH 7.2, containing 0.05% proclin 300.

### Applications

### Recommended Dilution

<b>ELISA Capture</b>	2-8 µg/mL
<b>ELISA Detector</b>	0.1-0.4 µg/mL
<b>WB</b>	1:1000-1:2000

### Data



Sandwich ELISA-Recombinant Mouse VCAM-1/CD106 protein standard curve. Background subtracted standard curve using VCAM-1/CD106 antibody(AN000920P) (Capture), VCAM-1/CD106 antibody(AN000920P)(Detector) in sandwich ELISA. The reference range value for Recombinant Mouse VCAM-1/CD106 protein is 0.16-10 ng/mL.

Western blot with Anti VCAM-1/CD106 Polyclonal antibody at dilution of 1:1000. Lane 1: Mouse spleen tissue lysate, Lane 2: Rat spleen tissue lysate.

### Preparation & Storage

<b>Storage</b>	Store at 4°C valid for 12 months or -20°C valid for long term storage, avoid freeze / thaw cycles.
<b>Shipping</b>	The product is shipped with ice pack, upon receipt, store it immediately at the temperature recommended.

### Background

VCAM-1 (CD106), a member of the immunoglobulin superfamily, is a cell surface protein expressed by activated endothelial cells and certain leukocytes (such as macrophages). VCAM-1 expression is induced by IL-1 beta, IL-4, TNF-alpha and IFN-gamma. VCAM-1 binds to leukocyte integrins VLA-4 and alpha 4 beta 7. The human and mouse VCAM-1 proteins share approximately 76% amino acid similarity.

### For Research Use Only