

## Recombinant Phospho-cdc25C (Ser216) Monoclonal Antibody

catalog number: **AN300220L**

**Note:** Centrifuge before opening to ensure complete recovery of vial contents.

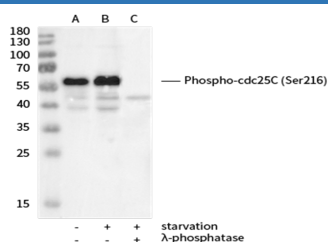
### Description

<b>Reactivity</b>	Human
<b>Immunogen</b>	A synthetic phosphopeptide corresponding to residues around Ser216 of the Human Phospho-cdc25C
<b>Host</b>	Rabbit
<b>Isotype</b>	IgG
<b>Clone</b>	8A7
<b>Purification</b>	Protein A
<b>Buffer</b>	10 mM sodium HEPES, 150 mM NaCl, 100 µg/mL protein protectant, 50% glycerol, pH 7.5

### Applications Recommended Dilution

<b>WB</b>	1000-1:5000
-----------	-------------

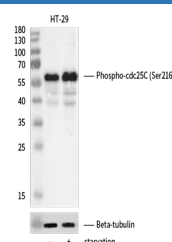
### Data



Western blot analysis of extracts from HT-29 (line A); serum-starved HT-29 (line B); serum-starved HT-29 treated with  $\lambda$ -phosphatase (line C) using Phospho-cdc25C (Ser216) Monoclonal Antibody at 1:1000 dilution.

**Observed-MW:60 kDa**

**Calculated-MW:53 kDa**



Western blot analysis of extracts from HT-29(-) and serum-starved HT-29 (+) using Phospho-cdc25C (Ser216) Monoclonal Antibody at 1:1000 dilution (upper) or Beta-Tubulin Loading Control Antibody, Mouse Mab at 1:10000 dilution (lower).

**Observed-MW:60 kDa**

**Calculated-MW:53 kDa**

### Preparation & Storage

<b>Storage</b>	This antibody can be stored at 2°C-8°C for one month without detectable loss of activity. Antibody products are stable for twelve months from date of receipt when stored at -20°C to -80°C. Preservative-Free. Avoid repeated freeze-thaw cycles.
<b>Shipping</b>	Ice bag

### Background

This gene encodes a conserved protein that plays a key role in the regulation of cell division. The encoded protein directs dephosphorylation of cyclin B-bound CDC2 and triggers entry into mitosis. It also suppresses p50-induced growth arrest. Multiple alternatively spliced transcript variants of this gene have been described.

### For Research Use Only