

MAP2 Monoclonal Antibody

catalog number: AN200047P

Note: Centrifuge before opening to ensure complete recovery of vial contents.

Description

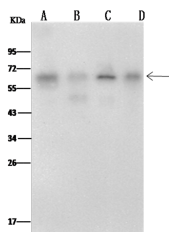
Reactivity	Human
Immunogen	Recombinant Human MAP2 Protein
Host	Mouse
Isotype	IgG1
Clone	6H12
Purification	Protein A
Buffer	0.2 µm filtered solution in PBS

Applications

Recommended Dilution

WB	1:500-1:1000
-----------	--------------

Data



Western Blot with MAP2 Monoclonal Antibody at dilution of 1:500. Lane A: HepG2 Whole Cell Lysate, Lane B: PC12 Whole Cell Lysate, Lane C: Jurkat Whole Cell Lysate, Lane D: A431 Whole Cell Lysate, Lysates/proteins at 30 µg per lane.

Observed-MW:60 kDa

Calculated-MW:52 kDa

Preparation & Storage

Storage	This antibody can be stored at 2°C-8°C for one month without detectable loss of activity. Antibody products are stable for twelve months from date of receipt when stored at -20°C to -80°C. Preservative-Free. Avoid repeated freeze-thaw cycles.
Shipping	Ice bag

Background

The protein encoded by this gene is a member of the methionyl aminopeptidase family. The encoded protein functions both by protecting the alpha subunit of eukaryotic initiation factor 2 from inhibitory phosphorylation and by removing the amino-terminal methionine residue from nascent proteins. Increased expression of this gene is associated with various forms of cancer, and the anti-cancer drugs fumagillin and ovalicin inhibit the protein by irreversibly binding to its active site. Inhibitors of this gene have also been shown to be effective for the treatment of obesity. A pseudogene of this gene is located on chromosome 1. Several transcript variants encoding different isoforms have been found for this gene.

For Research Use Only