

MRPL39 Polyclonal Antibody

catalog number: E-AB-15214

Note: Centrifuge before opening to ensure complete recovery of vial contents.

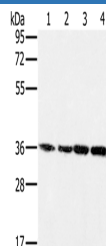
Description

| | |
|---------------------|--|
| Reactivity | Human;Mouse |
| Immunogen | Recombinant protein of human MRPL39 |
| Host | Rabbit |
| Isotype | IgG |
| Purification | Affinity purification |
| Buffer | Phosphate buffered solution, pH 7.4, containing 0.05% stabilizer and 50% glycerol. |

Applications

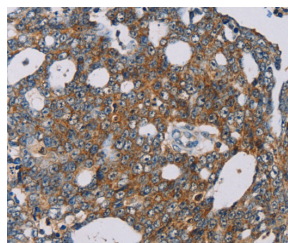
| Applications | Recommended Dilution |
|--------------|----------------------|
| WB | 1:500-1:2000 |
| IHC | 1:25-1:100 |

Data



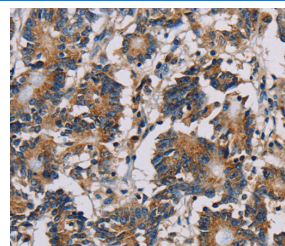
Western Blot analysis of 293T, K562, 231 and hela cell using MRPL39 Polyclonal Antibody at dilution of 1:400

Calculated-MW:39 kDa



Immunohistochemistry of paraffin-embedded Human cervical cancer using MRPL39 Polyclonal Antibody at dilution of

1:30



Immunohistochemistry of paraffin-embedded Human colon cancer using MRPL39 Polyclonal Antibody at dilution of

1:30

Preparation & Storage

| | |
|-----------------|--|
| Storage | Store at -20°C Valid for 12 months. Avoid freeze / thaw cycles. |
| Shipping | The product is shipped with ice pack, upon receipt, store it immediately at the temperature recommended. |

Background

Mammalian mitochondrial ribosomal proteins are encoded by nuclear genes and help in protein synthesis within the mitochondrion. Mitochondrial ribosomes (mitoribosomes) consist of a small 28S subunit and a large 39S subunit. They have an estimated 75% protein to rRNA composition compared to prokaryotic ribosomes, where this ratio is reversed. Another difference between mammalian mitoribosomes and prokaryotic ribosomes is that the latter contain a 5S rRNA.

For Research Use Only