

EpCAM Polyclonal Antibody

catalog number: E-AB-40300

Note: Centrifuge before opening to ensure complete recovery of vial contents.

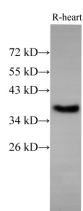
Description

Reactivity	Human;Mouse;Rat
Immunogen	Recombinant Human SDHA protein expressed by E.coli
Host	Rabbit
Isotype	IgG
Purification	Antigen Affinity Purification
Buffer	PBS with 0.05% Proclin300, 1% protective protein and 50% glycerol, pH7.4

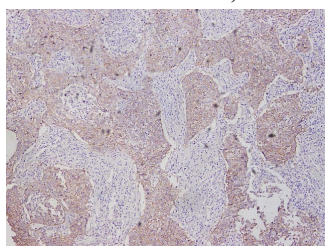
Applications Recommended Dilution

WB	1:500-1:1000
IHC	300-1:700

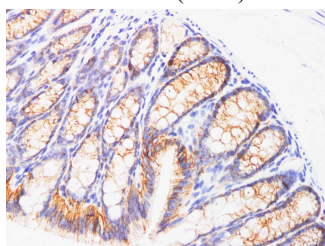
Data



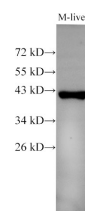
Western Blot analysis of Rat Heart using EpCAM Polyclonal Antibody at dilution of 1:500
Observed-MW:35 ,40 kDa
Calculated-MW:35,40 kDa



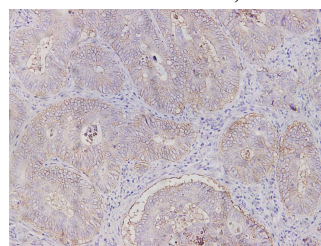
Immunohistochemistry of paraffin-embedded Human lung cancer tissue using EpCAM Polyclonal Antibody at dilution of 1:700(×100)



Immunohistochemistry of paraffin-embedded Mouse colon using EpCAM Polyclonal Antibody at dilution of 1:100



Western Blot analysis of Mouse liver using EpCAM Polyclonal Antibody at dilution of 1:500
Observed-MW:35 ,40 kDa
Calculated-MW:35,40 kDa



Immunohistochemistry of paraffin-embedded Human colon cancer tissue using EpCAM Polyclonal Antibody at dilution of 1:700(×200)

Preparation & Storage

For Research Use Only

Toll-free: 1-888-852-8623
Web: www.elabscience.com

Tel: 1-832-243-6086
Email: techsupport@elabscience.com

Fax: 1-832-243-6017

Rev. V2.1

Storage

Store at -20°C Valid for 12 months. Avoid freeze / thaw cycles.

Shipping

The product is shipped with ice pack, upon receipt, store it immediately at the temperature recommended.

Background

Epithelial cell adhesion molecule (EpCAM, CD326) is a type I transmembrane glycoprotein that functions as a homophilic, epithelial-specific intercellular cell-adhesion molecule. In addition to cell adhesion, EpCAM is also involved in cellular signaling, cell migration, proliferation, and differentiation. EpCAM is highly expressed on most carcinomas and therefore of potential use as a diagnostic and prognostic marker for a variety of carcinomas, and has become a therapeutic target.

For Research Use Only

Toll-free: 1-888-852-8623

Web: www.elabscience.com

Tel: 1-832-243-6086

Email: techsupport@elabscience.com

Fax: 1-832-243-6017

Rev. V2.1