

Recombinant Human CXCL9/MIG Protein(Trx Tag)

Catalog Number: PDEH100564



Note: Centrifuge before opening to ensure complete recovery of vial contents.

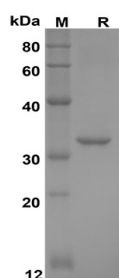
Description

Species	Human
Source	E.coli-derived Human CXCL9 protein Thr23-Thr125, with an N-terminal Trx
Mol_Mass	31.3 kDa
Accession	Q07325
Bio-activity	Not validated for activity

Properties

Purity	> 95% as determined by reducing SDS-PAGE.
Endotoxin	< 10 EU/mg of the protein as determined by the LAL method
Storage	Generally, lyophilized proteins are stable for up to 12 months when stored at -20 to -80 °C. Reconstituted protein solution can be stored at 4-8°C for 2-7 days. Aliquots of reconstituted samples are stable at < -20°C for 3 months.
Shipping	This product is provided as lyophilized powder which is shipped with ice packs.
Formulation	Lyophilized from a 0.2 µm filtered solution in PBS with 5% Trehalose and 5% Mannitol.
Reconstitution	It is recommended that sterile water be added to the vial to prepare a stock solution of 0.5 mg/mL. Concentration is measured by UV-Vis

Data



SDS-PAGE analysis of Human CXCL9/MIG proteins, 2µg/lane of Recombinant Human CXCL9/MIG proteins was resolved with SDS-PAGE under reducing conditions, showing bands at 32 KD

Background

Chemokine (C-X-C Motif) Ligand 9 (CXCL9) belongs to the intercrine alpha (chemokine CXC) family. It is secreted by interferon stimulated monocytes, macrophages and endothelial cells, which elicits chemotactic functions by interacting with the chemokine receptor CXCR3. CXCL9 acts as a Th1 (type 1 helper T) cell chemoattractant and plays a role in the growth, activation and movement of cells associated with immune and inflammatory responses, and in tumour growth inhibition. It is closely related to two other CXC chemokines called CXCL10 and CXCL11, whose genes are located near the gene for CXCL9 on human chromosome 4.

For Research Use Only

A Reliable Research Partner in Life Science and Medicine
Tel:400-999-2100

Email:techsupport@elabscience.cn

Web:www.elabscience.cn

Rev. V1.1