

## COL4A1 Polyclonal Antibody

catalog number: **E-AB-15566**

**Note:** *Centrifuge before opening to ensure complete recovery of vial contents.*

### Description

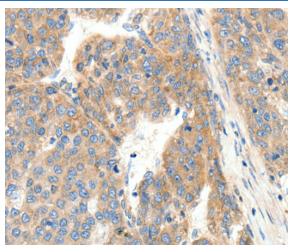
<b>Reactivity</b>	Human;Mouse
<b>Immunogen</b>	Synthetic peptide of human COL4A1
<b>Host</b>	Rabbit
<b>Isotype</b>	IgG
<b>Purification</b>	Affinity purification
<b>Buffer</b>	Phosphate buffered solution, pH 7.4, containing 0.05% stabilizer and 50% glycerol.

### Applications

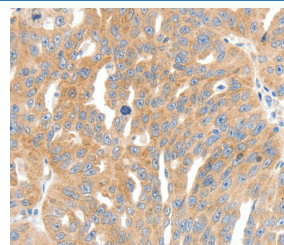
### Recommended Dilution

<b>IHC</b>	1:25-1:100
------------	------------

### Data



1:30



1:30

Immunohistochemistry of paraffin-embedded Human ovarian cancer tissue using COL4A1 Polyclonal Antibody at dilution 1:30. Immunohistochemistry of paraffin-embedded Human breast cancer tissue using COL4A1 Polyclonal Antibody at dilution 1:30.

### Preparation & Storage

<b>Storage</b>	Store at -20°C Valid for 12 months. Avoid freeze / thaw cycles.
<b>Shipping</b>	The product is shipped with ice pack, upon receipt, store it immediately at the temperature recommended.

### Background

This gene encodes the major type IV alpha collagen chain of basement membranes. Like the other members of the type IV collagen gene family, this gene is organized in a head-to-head conformation with another type IV collagen gene so that each gene pair shares a common promoter.

### For Research Use Only