

Elab Fluor® 594-conjugated Vinculin Monoclonal Antibody

catalog number: AN00297Y

Note: Centrifuge before opening to ensure complete recovery of vial contents.

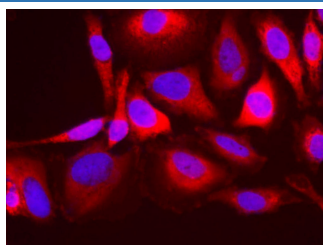
Description

| | |
|---------------------|--|
| Reactivity | Human;Mouse;Rat |
| Immunogen | Recombinant human Vinculin protein expressed by E.coli |
| Host | Mouse |
| Isotype | IgG1 |
| Clone | 4D4 |
| Purification | Protein A/G Purification |
| Buffer | PBS with 0.05% Proclin300, 1% protective protein and 50% glycerol, pH7.4 |

Applications Recommended Dilution

| | |
|----|-------------|
| IF | 1:100-1:200 |
|----|-------------|

Data



Immunofluorescence analysis of HeLa cells using Elab Fluor® 594-conjugated Vinculin Monoclonal Antibody at dilution of 1:100

Preparation & Storage

| | |
|-----------------|---|
| Storage | Store at -20°C Valid for 12 months. Avoid freeze / thaw cycles. Protected from prolonged exposure to light. |
| Shipping | The product is shipped with ice pack, upon receipt, store it immediately at the temperature recommended. |

Background

Vinculin belongs to the vinculin/alpha-catenin family. It is an actin filament (F-actin)-binding protein which involved in cell-matrix adhesion and cell-cell adhesion. Vinculin regulates cell-surface E-cadherin expression and potentiates mechanosensing by the E-cadherin complex. It may also play important roles in cell morphology and locomotion. Vinculin is a 117-kDa, 1,066-amino-acid protein which is ubiquitously expressed. Its splice variant, metavinculin (124 kDa), is muscle-specific.

For Research Use Only