

Recombinant Human CLIC2 Protein (His Tag)

Catalog Number: PKSH032247

Note: Centrifuge before opening to ensure complete recovery of vial contents.

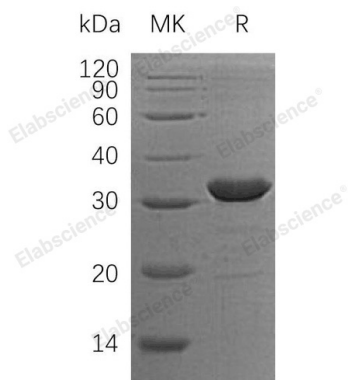
Description

Species	Human
Source	E.coli-derived Human CLIC2 protein Met 1-Ser247, with an N-terminal His
Calculated MW	30.5 kDa
Observed MW	32 kDa
Accession	O15247
Bio-activity	Not validated for activity

Properties

Purity	> 95 % as determined by reducing SDS-PAGE.
Concentration	Subject to label value.
Endotoxin	< 1.0 EU per µg of the protein as determined by the LAL method.
Storage	Store at < -20°C, stable for 6 months. Please minimize freeze-thaw cycles.
Shipping	This product is provided as liquid. It is shipped at frozen temperature with blue ice/gel packs. Upon receipt, store it immediately at < -20°C.
Formulation	Supplied as a 0.2 µm filtered solution of 20mM Tris-HCl, 100mM NaCl, 1mM DTT, 20% Glycerol, pH 8.0.

Data



> 95 % as determined by reducing SDS-PAGE.

Background

Chloride Intracellular Channel Protein 2 (CLIC2) is a critical component of all living cells; it regulates cellular traffic of Chloride ion and it can be inserted into membranes and form chloride ion channels. Membrane insertion seems to be redox-regulated and may occur only under oxidizing conditions, channel activity depends on the pH. CLIC2 is involved in regulating membrane potential and organic solute transport. CLIC2 modulates the activity of RYR2 and inhibits Calcium influx. CLIC2 can be detected in the adult brain, liver, lung, heart, stomach, spleen and testis. It is expressed in fetal liver and adult skeletal muscle. CLIC2 is a potential candidate for one of many diseases linked to Xq28.