

S100A9 Polyclonal Antibody

catalog number: **E-AB-40317**

Note: Centrifuge before opening to ensure complete recovery of vial contents.

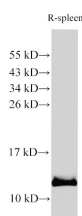
Description

Reactivity	Human;Mouse;Rat
Immunogen	Recombinant Rat Protein S100-A9 protein
Host	Rabbit
Isotype	IgG
Purification	Antigen Affinity Purification
Buffer	PBS with 0.05% Proclin300, 1% protective protein and 50% glycerol, pH7.4

Applications

Applications	Recommended Dilution
WB	1:500-1:1000
IHC	1:100-1:300

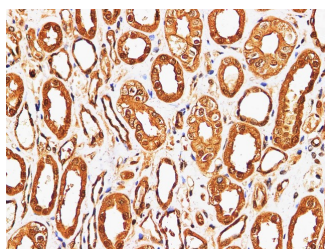
Data



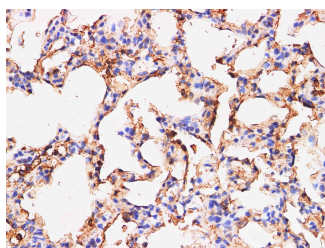
Western Blot analysis of Rat spleen using S100A9 Polyclonal Antibody at dilution of 1:1000.

Observed-MW:13 kDa

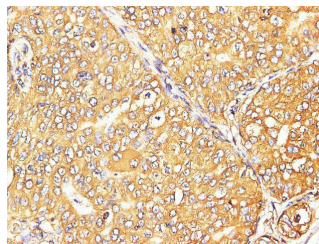
Calculated-MW:13 kDa



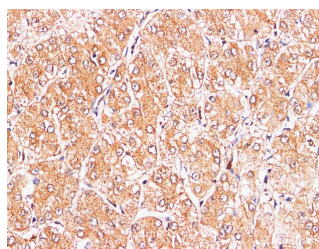
Immunohistochemistry of paraffin-embedded Human kidney using S100A9 Polyclonal Antibody at dilution of 1:200.



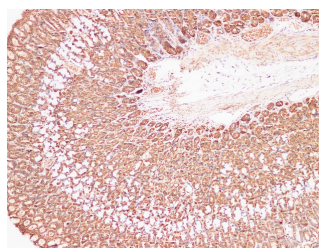
Immunohistochemistry of paraffin-embedded Rat lung using S100A9 Polyclonal Antibody at dilution of 1:200.



Immunohistochemistry of paraffin-embedded Human breast cancer using S100A9 Polyclonal Antibody at dilution of 1:200.



Immunohistochemistry of paraffin-embedded Human liver cancer using S100A9 Polyclonal Antibody at dilution of 1:200.



Immunohistochemistry of paraffin-embedded Rat stomach using S100A9 Polyclonal Antibody at dilution of 1:200 (100×).

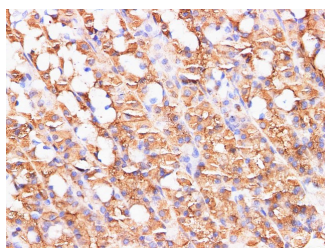
For Research Use Only

Toll-free: 1-888-852-8623
Web: www.elabscience.com

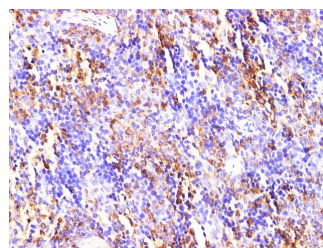
Tel: 1-832-243-6086
Email: techsupport@elabscience.com

Fax: 1-832-243-6017

Rev. V2.0



Immunohistochemistry of paraffin-embedded Rat stomach using S100A9 Polyclonal Antibody at dilution of 1:200 (400×).



Immunohistochemistry of paraffin-embedded Mouse spleen using S100A9 Polyclonal Antibody at dilution of 1:200.

Preparation & Storage

Storage

Store at -20°C Valid for 12 months. Avoid freeze / thaw cycles.

Shipping

The product is shipped with ice pack, upon receipt, store it immediately at the temperature recommended.

Background

The protein encoded by this gene is a member of the S100 family of proteins containing 2 EF-hand calcium-binding motifs. S100 proteins are localized in the cytoplasm and/or nucleus of a wide range of cells, and involved in the regulation of a number of cellular processes such as cell cycle progression and differentiation. S100 genes include at least 13 members which are located as a cluster on chromosome 1q21.