

## Recombinant Cleaved PARP1 p25 Monoclonal Antibody

catalog number: **AN301494L**

**Note:** Centrifuge before opening to ensure complete recovery of vial contents.

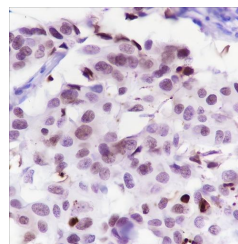
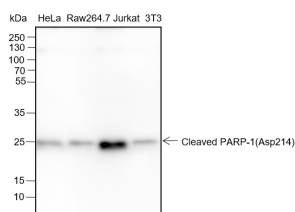
### Description

<b>Reactivity</b>	Human;Mouse
<b>Immunogen</b>	Recombinant human Cleaved PARP1 p25 fragment
<b>Host</b>	Rabbit
<b>Isotype</b>	IgG, κ
<b>Clone</b>	A189
<b>Purification</b>	Protein A purified
<b>Buffer</b>	PBS, 50% glycerol, 0.05% Proclin 300, 0.05% protein protectant.

### Applications Recommended Dilution

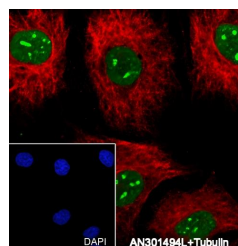
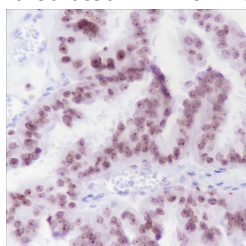
<b>WB</b>	1:500-1:2000
<b>IHC</b>	1:200-1:1000
<b>IF</b>	1:50-1:100

### Data



Western Blot with Cleaved PARP1 p25 Monoclonal Antibody Immunohistochemistry of paraffin-embedded Human breast cancer using Cleaved PARP1 p25 Monoclonal Antibody at dilution of 1:2000. Lane 1: HeLa, Lane 2: Raw264.7, Lane 3: Jurkat, Lane 4: 3T3

**Observed-MW:25 kDa**  
**Calculated-MW:25 kDa**



Immunohistochemistry of paraffin-embedded Human ovarian cancer using Cleaved PARP1 p25 Monoclonal Antibody at dilution of 1:1000. Immunofluorescent analysis of (100% Ice-cold methanol) fixed HeLa cells using anti-Cleaved PARP1 p25 Monoclonal Antibody at dilution of 1:100.

### Preparation & Storage

<b>Storage</b>	Store at -20°C Valid for 12 months. Avoid freeze / thaw cycles.
<b>Shipping</b>	Ice bag

### Background

### For Research Use Only

Toll-free: 1-888-852-8623  
Web: [www.elabscience.com](http://www.elabscience.com)

Tel: 1-832-243-6086  
Email: [techsupport@elabscience.com](mailto:techsupport@elabscience.com)

Fax: 1-832-243-6017

Rev. V1.0

Poly-ADP-ribosyltransferase that mediates poly-ADP-ribosylation of proteins and plays a key role in DNA repair. Mainly mediates glutamate and aspartate ADP-ribosylation of target proteins: the ADP-D-ribosyl group of NAD<sup>+</sup> is transferred to the acceptor carboxyl group of glutamate and aspartate residues and further ADP-ribosyl groups are transferred to the 2'-position of the terminal adenosine moiety, building up a polymer with an average chain length of 20-30 units.