

# Recombinant Human GITR/TNFRSF18 Protein(Fc Tag)

Catalog Number: PDMH100336



**Note:** Centrifuge before opening to ensure complete recovery of vial contents.

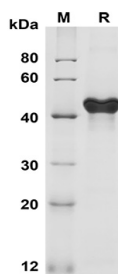
## Description

<b>Species</b>	Human
<b>Source</b>	Mammalian-derived Human GITR/TNFRSF18 proteins Gln26-Glu161, with an C-terminal Fc
<b>Mol_Mass</b>	39.9 kDa
<b>Accession</b>	Q9Y5U5
<b>Bio-activity</b>	Not validated for activity

## Properties

<b>Purity</b>	> 90% as determined by reducing SDS-PAGE.
<b>Endotoxin</b>	< 1.0 EU/mg of the protein as determined by the LAL method
<b>Storage</b>	Generally, lyophilized proteins are stable for up to 12 months when stored at -20 to -80 °C. Reconstituted protein solution can be stored at 4-8°C for 2-7 days. Aliquots of reconstituted samples are stable at < -20°C for 3 months.
<b>Shipping</b>	This product is provided as lyophilized powder which is shipped with ice packs.
<b>Formulation</b>	Lyophilized from a 0.2 µm filtered solution in PBS with 5% Trehalose and 5% Mannitol.
<b>Reconstitution</b>	It is recommended that sterile water be added to the vial to prepare a stock solution of 0.5 mg/mL. Concentration is measured by UV-Vis.

## Data



SDS-PAGE analysis of Human GITR/TNFRSF18 proteins, 2 µg/lane of Recombinant Human GITR/TNFRSF18 proteins was resolved with SDS-PAGE under reducing conditions, showing bands at 45 KD

## Background

GITR, also known as TNFRSF18(CD357), belongs to the tumor necrosis factor receptor (TNF-R) superfamily. It is the receptor for TNFSF18. GITR plays a key role in dominant immunological self-tolerance maintained by CD25(+)CD4(+) regulatory T cells. GITR may be involved in interactions between activated T-lymphocytes and endothelial cells and in the regulation of T-cell receptor-mediated cell death. GITR and its ligand are important costimulatory molecules in the pathogenesis of autoimmune diseases. It also mediates NF-kappa-B activation via the TRAF2/NIK pathway.

## For Research Use Only

A Reliable Research Partner in Life Science and Medicine  
Tel:400-999-2100

Email:[techsupport@elabscience.cn](mailto:techsupport@elabscience.cn)

Web:[www.elabscience.cn](http://www.elabscience.cn)

Rev. V1.5