

SLC5A6 Polyclonal Antibody

catalog number: E-AB-92723

Note: Centrifuge before opening to ensure complete recovery of vial contents.

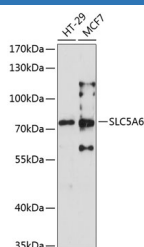
Description

Reactivity	Human
Immunogen	A synthetic peptide of human SLC5A6
Host	Rabbit
Isotype	IgG
Purification	Affinity purification
Buffer	Phosphate buffered solution, pH 7.4, containing 0.05% stabilizer and 50% glycerol.

Applications Recommended Dilution

WB	1:500-1:2000
-----------	--------------

Data



Western blot analysis of extracts of various cell lines using SLC5A6 Polyclonal Antibody at 1:3000 dilution.

Observed-MV:71 kDa

Calculated-MV:68 kDa

Preparation & Storage

Storage	Store at -20°C Valid for 12 months. Avoid freeze / thaw cycles.
Shipping	The product is shipped with ice pack, upon receipt, store it immediately at the temperature recommended.

Background

Sodium-dependent multivitamin transporter that transports pantothenate, biotin and lipoate. Required for biotin and pantothenate uptake in the intestine (By similarity). Plays a role in the maintenance of intestinal mucosa integrity, by providing the gut mucosa with biotin (By similarity). May play a role in the transport of biotin and pantothenate into the brain across the blood-brain barrier. May also be involved in the sodium-dependent transport of iodide ions.

For Research Use Only