

Phospho-IRS1 (Ser636) Polyclonal Antibody

catalog number: E-AB-20908

Note: Centrifuge before opening to ensure complete recovery of vial contents.

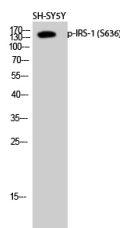
Description

Reactivity	Human;Mouse;Rat
Immunogen	Synthesized peptide derived from human IRS-1 around the phosphorylation site of Ser636
Host	Rabbit
Isotype	IgG
Purification	Affinity purification
Buffer	Phosphate buffered solution, pH 7.4, containing 0.05% stabilizer, 0.5% protein protectant and 50% glycerol.

Applications

Applications	Recommended Dilution
WB	1:500-1:2000
IHC	1:100-1:300
IF	1:200-1:1000

Data



Western Blot analysis of SH-SY5Y cells using Phospho-IRS1 (Ser636) Polyclonal Antibody at dilution of 1:2000

Observed-MW:150 kDa

Calculated-MW:132 kDa

Preparation & Storage

Storage	Store at -20°C Valid for 12 months. Avoid freeze / thaw cycles.
Shipping	The product is shipped with ice pack, upon receipt, store it immediately at the temperature recommended.

Background

May mediate the control of various cellular processes by insulin. When phosphorylated by the insulin receptor binds specifically to various cellular proteins containing SH2 domains such as phosphatidylinositol 3-kinase p85 subunit or GRB2. Activates phosphatidylinositol 3-kinase when bound to the regulatory p85 subunit.

For Research Use Only