

## Recombinant Rat Cathepsin E/CTSE Protein (His Tag)

**Catalog Number:** PKSR030138

**Note:** Centrifuge before opening to ensure complete recovery of vial contents.

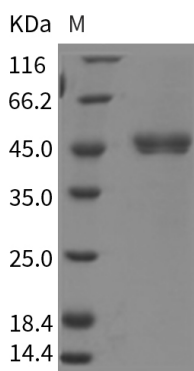
### Description

<b>Species</b>	Rat
<b>Source</b>	HEK293 Cells-derived Rat Cathepsin E/CTSE protein Met1-Pro398, with an C-terminal His
<b>Calculated MW</b>	42.1 kDa
<b>Accession</b>	AAH62002.1
<b>Bio-activity</b>	Not validated for activity

### Properties

<b>Purity</b>	> 90 % as determined by reducing SDS-PAGE.
<b>Endotoxin</b>	< 1.0 EU per µg of the protein as determined by the LAL method.
<b>Storage</b>	Generally, lyophilized proteins are stable for up to 12 months when stored at -20 to -80°C. Reconstituted protein solution can be stored at 4-8°C for 2-7 days. Aliquots of reconstituted samples are stable at < -20°C for 3 months.
<b>Shipping</b>	This product is provided as lyophilized powder which is shipped with ice packs.
<b>Formulation</b>	Lyophilized from sterile 12.5 mM MES, 75 mM NaCl, 50 % glycerol, pH 6.5 Normally 5% - 8% trehalose, mannitol and 0.01% Tween 80 are added as protectants before lyophilization. Please refer to the specific buffer information in the printed manual.
<b>Reconstitution</b>	Please refer to the printed manual for detailed information.

### Data



> 90 % as determined by reducing SDS-PAGE.

### Background

Cathepsin E Protein (CTSE Protein) is a member of the peptidase C1 family that is a gastric aspartic protease that functions as a disulfide-linked homodimer. Cathepsin E Protein (CTSE Protein) is predominantly present in the cells of immune system and is frequently implicated in antigen processing via the MHC class II pathway which however does not appear to be involved in the digestion of dietary protein. The protein has a specificity similar to that of pepsin and pepsin. Cathepsin E Protein (CTSE Protein) is found in highest concentration in the surface of epithelial mucus-producing cells of the stomach and also been found in more than half of the gastric cancers. It appears, therefore, to be an oncofetal antigen.

### For Research Use Only

Toll-free: 1-888-852-8623  
Web: [www.elabscience.com](http://www.elabscience.com)

Tel: 1-832-243-6086  
Email: [techsupport@elabscience.com](mailto:techsupport@elabscience.com)

Fax: 1-832-243-6017