

## Recombinant Mouse IL-28A protein(His Tag)

**Catalog Number: PKSM041473**

**Note:** Centrifuge before opening to ensure complete recovery of vial contents.

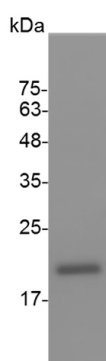
### Description

<b>Species</b>	Mouse
<b>Source</b>	E.coli-derived Mouse IL-28A protein Asp 20-Val 193, with an C-terminal His
<b>Calculated MW</b>	22.6 kDa
<b>Observed MW</b>	17-25 kDa
<b>Accession</b>	AAX58714.1
<b>Bio-activity</b>	Measure by its ability to protect HepG2 cells infected with encephalomyocarditis (EMC) virus. The ED <sub>50</sub> for this effect is <2 ng/mL.

### Properties

<b>Purity</b>	> 98 % as determined by reducing SDS-PAGE.
<b>Endotoxin</b>	< 0.1 EU per µg of the protein as determined by the LAL method.
<b>Storage</b>	Generally, lyophilized proteins are stable for up to 12 months when stored at -20 to -80 °C. Reconstituted protein solution can be stored at 4-8°C for 2-7 days. Aliquots of reconstituted samples are stable at < -20°C for 3 months.
<b>Shipping</b>	This product is provided as lyophilized powder which is shipped with ice packs.
<b>Formulation</b>	Lyophilized from sterile PBS, pH 7.4. Normally 5% - 8% trehalose, mannitol and 0.01% Tween 80 are added as protectants before lyophilization. Please refer to the specific buffer information in the printed manual.
<b>Reconstitution</b>	Please refer to the printed manual for detailed information.

### Data



> 98 % as determined by reducing SDS-PAGE.

### Background

IL-28A (Interferon- $\lambda$ 2, IFN- $\lambda$ 2), IL-28B/IFN- $\lambda$ 3, and IL-29/IFN- $\lambda$ 1 are type III interferons which are distantly related to IL-10 family and type I IFN family cytokines. Mature human IL-28A is an approximately 22-25 kDa protein that shares 66% amino acid (aa) sequence identity with mouse and rat IL-28A and shows cross-species activity. It shares 96% and 70% aa sequence identity with human IL-28B and IL-29, respectively. IL-28A promotes the Th1 polarization of dendritic cells in the airway and inhibits Th2 and Th17 mediated inflammation. IL-28A additionally exhibits anti-tumor activity, in part by enhancing IL-12 dependent anti-tumor CTL responses in vivo. In contrast, it is up-regulated in invasive bladder cancer where it promotes tumor cell migration.

### For Research Use Only