

Recombinant IBA1/AIF1 Monoclonal Antibody

catalog number: **AN300449P**

Note: Centrifuge before opening to ensure complete recovery of vial contents.

Description

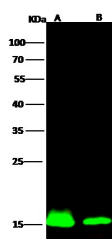
Reactivity	Human
Immunogen	Recombinant Human IBA1/AIF1 Protein
Host	Rabbit
Isotype	IgG
Clone	2D12
Purification	Protein A
Buffer	0.2 µm filtered solution in PBS

Applications

Recommended Dilution

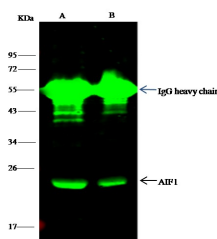
WB	1:500-1:2000
IP	1-4 µL/mg of lysate

Data



Western Blot with AIF1 Monoclonal Antibody at dilution of 1:500 dilution. Lane A: THP-1 Whole Cell Lysate, Lane B: HL-60 Whole Cell Lysate, Lysates/proteins at 30 µg per lane.

Observed-MW:15 kDa
Calculated-MW:17 kDa



Immunoprecipitation analysis using 2 µL anti-AIF1 Monoclonal Antibody and 15 µl of 50 % Protein G agarose. Western blot was performed from the immunoprecipitate using AIF1 Monoclonal Antibody at a dilution of 1:100. Lane A:0.5 mg HepG2 Whole Cell Lysate, Lane B:0.5 mg THP-1 Whole Cell Lysate

Observed-MW:15 kDa
Calculated-MW:17 kDa

Preparation & Storage

Storage	This antibody can be stored at 2°C-8°C for one month without detectable loss of activity. Antibody products are stable for twelve months from date of receipt when stored at -20°C to -80°C. Preservative-Free. Avoid repeated freeze-thaw cycles.
Shipping	Ice bag

Background

Actin-binding protein that enhances membrane ruffling and RAC activation. Enhances the actin-bundling activity of LCP1. Binds calcium. Plays a role in RAC signaling and in phagocytosis. May play a role in macrophage activation and function. Promotes the proliferation of vascular smooth muscle cells and of T-lymphocytes. Enhances lymphocyte migration. Plays a role in vascular inflammation.

For Research Use Only

Toll-free: 1-888-852-8623
Web: www.elabscience.com

Tel: 1-832-243-6086
Email: techsupport@elabscience.com

Fax: 1-832-243-6017

Rev. V1.0