

## SYT2 Polyclonal Antibody

catalog number: E-AB-53274

**Note:** Centrifuge before opening to ensure complete recovery of vial contents.

### Description

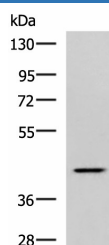
<b>Reactivity</b>	Human;Mouse;Rat
<b>Immunogen</b>	Synthetic peptide of human SYT2
<b>Host</b>	Rabbit
<b>Isotype</b>	IgG
<b>Purification</b>	Antigen affinity purification
<b>Conjugation</b>	Unconjugated
<b>Buffer</b>	Phosphate buffered solution, pH 7.4, containing 0.05% stabilizer and 50% glycerol.

### Applications

### Recommended Dilution

<b>WB</b>	1:500-1:2000
-----------	--------------

### Data



Western blot analysis of Hela cell lysate using SYT2

Polyclonal Antibody at dilution of 1:800

**Observed-MW:Refer to figures**

**Calculated-MW:47 kDa**

### Preparation & Storage

<b>Storage</b>	Store at -20°C Valid for 12 months. Avoid freeze / thaw cycles.
<b>Shipping</b>	The product is shipped with ice pack,upon receipt,store it immediately at the temperature recommended.

### Background

This gene encodes a synaptic vesicle membrane protein. The encoded protein is thought to function as a calcium sensor in vesicular trafficking and exocytosis. Mutations in this gene are associated with myasthenic syndrome, presynaptic, congenital, with or without motor neuropathy. Alternative splicing results in multiple transcript variants.

### For Research Use Only