

## CETN3 Polyclonal Antibody

**catalog number:** E-AB-62036

**Note:** Centrifuge before opening to ensure complete recovery of vial contents.

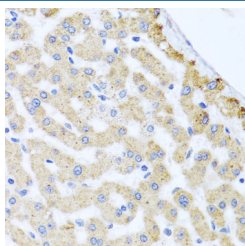
### Description

<b>Reactivity</b>	Human;Mouse;Rat
<b>Immunogen</b>	Recombinant fusion protein of human CETN3 (NP_004356.2).
<b>Host</b>	Rabbit
<b>Isotype</b>	IgG
<b>Purification</b>	Affinity purification
<b>Buffer</b>	Phosphate buffered solution, pH 7.4, containing 0.05% stabilizer and 50% glycerol.

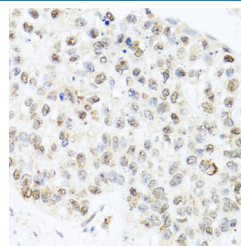
### Applications

Applications	Recommended Dilution
IHC	1:50-1:100
IF	1:50-1:200

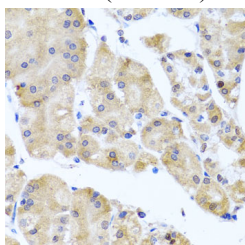
### Data



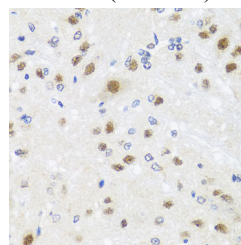
Immunohistochemistry of paraffin-embedded Human liver damage using CETN3 Polyclonal Antibody at dilution of 1:100 (40x lens).



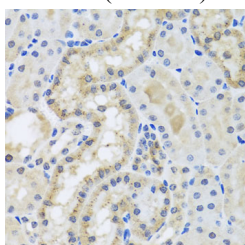
Immunohistochemistry of paraffin-embedded Human lung cancer using CETN3 Polyclonal Antibody at dilution of 1:100 (40x lens).



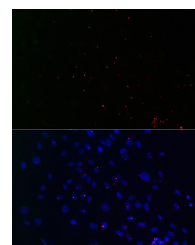
Immunohistochemistry of paraffin-embedded Human stomach using CETN3 Polyclonal Antibody at dilution of 1:100 (40x lens).



Immunohistochemistry of paraffin-embedded Rat brain using CETN3 Polyclonal Antibody at dilution of 1:100 (40x lens).

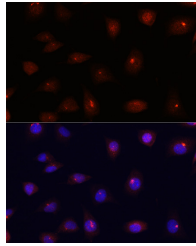


Immunohistochemistry of paraffin-embedded Mouse kidney using CETN3 Polyclonal Antibody at dilution of 1:100 (40x lens).

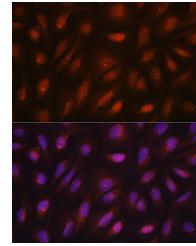


Immunofluorescence analysis of C6 cells using CETN3 Polyclonal Antibody at dilution of 1:100. Blue: DAPI for nuclear staining.

### For Research Use Only



Immunofluorescence analysis of L929 cells using CETN3 Polyclonal Antibody at dilution of 1:100. Blue: DAPI for nuclear staining.



Immunofluorescence analysis of U2OS cells using CETN3 Polyclonal Antibody at dilution of 1:100. Blue: DAPI for nuclear staining.

## Preparation & Storage

### Storage

Store at -20°C Valid for 12 months. Avoid freeze / thaw cycles.

### Shipping

The product is shipped with ice pack, upon receipt, store it immediately at the temperature recommended.

## Background

The protein encoded by this gene contains four EF-hand calcium binding domains, and is a member of the centrin protein family. Centrin is evolutionarily conserved proteins similar to the CDC31 protein of *S. cerevisiae*. Yeast CDC31 is located at the centrosome of interphase and mitotic cells, where it plays a fundamental role in centrosome duplication and separation. Multiple forms of the proteins similar to the yeast centrin have been identified in human and other mammalian cells, some of which have been shown to be associated with centrosome fractions. This protein appears to be one of the most abundant centrin associated with centrosome, which suggests a similar function to its yeast counterpart. Alternatively spliced transcript variants encoding different isoforms have been found for this gene.

## For Research Use Only