

Recombinant Human E-Cadherin/CDH1 Protein (Fc Tag)

Catalog Number: PKSH031764

Note: *Centrifuge before opening to ensure complete recovery of vial contents.*

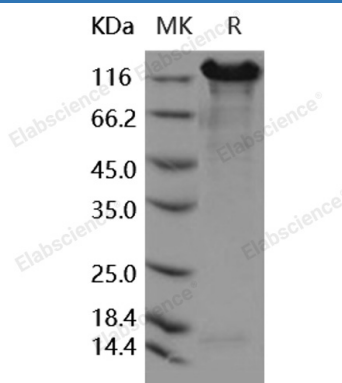
Description

Species	Human
Source	HEK293 Cells-derived Human E-Cadherin/CDH1 protein Met 1-Ile707, with an C-terminal hFc
Calculated MW	87.1 kDa
Observed MW	116-126 kDa
Accession	P12830
Bio-activity	Measured by the ability of the immobilized protein to support the adhesion of MCF-7 human breast adenocarcinoma cells. When cells are added to E-Cad coated plates (5 µg/mL, 100 µL/well), approximately 33% will adhere specifically after 90 minutes at 37 °C.

Properties

Purity	> 90 % as determined by reducing SDS-PAGE.
Endotoxin	< 1.0 EU per µg of the protein as determined by the LAL method.
Storage	Generally, lyophilized proteins are stable for up to 12 months when stored at -20 to -80°C. Reconstituted protein solution can be stored at 4-8°C for 2-7 days. Aliquots of reconstituted samples are stable at < -20°C for 3 months.
Shipping	This product is provided as lyophilized powder which is shipped with ice packs.
Formulation	Lyophilized from sterile PBS, pH 7.4 Normally 5% - 8% trehalose, mannitol and 0.01% Tween 80 are added as protectants before lyophilization. Please refer to the specific buffer information in the printed manual.
Reconstitution	Please refer to the printed manual for detailed information.

Data



> 90 % as determined by reducing SDS-PAGE.

Background

For Research Use Only

Toll-free: 1-888-852-8623
Web: www.elabscience.com

Tel: 1-832-243-6086
Email: techsupport@elabscience.com

Fax: 1-832-243-6017

Cadherins are calcium-dependent cell adhesion proteins which preferentially interact with themselves in a homophilic manner in connecting cells; and thus may contribute to the sorting of heterogeneous cell type. E-cadherin (E-Cad); also known as CDH1 and CD324; is a calcium-dependent cell adhesion molecule the intact function of which is crucial for the establishment and maintenance of epithelial tissue polarity and structural integrity. Mutations in CDH1 occur in diffuse type gastric cancer; lobular breast cancer; and endometrial cancer. In human cancers; partial or complete loss of E-cadherin expression correlates with malignancy. During apoptosis or with calcium influx; E-Cad is cleaved by the metalloproteinase to produce fragments of about 38 kDa (E-CAD/CTF1); 33 kDa (E-CAD/CTF2) and 29 kDa (E-CAD/CTF3); respectively. E-Cad has been identified as a potent invasive suppressor; as downregulation of E-cadherin expression is involved in dysfunction of the cell-cell adhesion system; and often correlates with strong invasive potential and poor prognosis of human carcinomas.

For Research Use Only

Toll-free: 1-888-852-8623
Web: www.elabscience.com

Tel: 1-832-243-6086
Email: techsupport@elabscience.com

Fax: 1-832-243-6017