

## Recombinant Mouse PIGR Protein (His Tag)

**Catalog Number:** PKSM040856

**Note:** Centrifuge before opening to ensure complete recovery of vial contents.

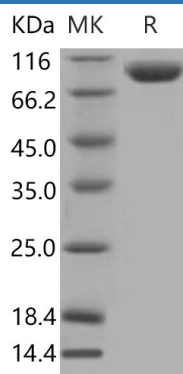
### Description

<b>Species</b>	Mouse
<b>Source</b>	HEK293 Cells-derived Mouse PIGR protein Met 1-Lys 645, with an C-terminal His
<b>Mol_Mass</b>	70.8 kDa
<b>Accession</b>	NP_035212.2
<b>Bio-activity</b>	Immobilized recombinant mouse PIGR at 5 µg/ml (100 µl/well) can bind mouse IgM with a linear range of 0.156-10 µg/ml.

### Properties

<b>Purity</b>	> 97 % as determined by reducing SDS-PAGE.
<b>Endotoxin</b>	< 1.0 EU per µg of the protein as determined by the LAL method.
<b>Storage</b>	Generally, lyophilized proteins are stable for up to 12 months when stored at -20 to -80 °C. Reconstituted protein solution can be stored at 4-8°C for 2-7 days. Aliquots of reconstituted samples are stable at < -20°C for 3 months.
<b>Shipping</b>	This product is provided as lyophilized powder which is shipped with ice packs.
<b>Formulation</b>	Lyophilized from sterile PBS, pH 7.4 Normally 5% - 8% trehalose, mannitol and 0.01% Tween 80 are added as protectants before lyophilization. Please refer to the specific buffer information in the printed manual.
<b>Reconstitution</b>	Please refer to the printed manual for detailed information.

### Data



> 97 % as determined by reducing SDS-PAGE.

### Background

Polymeric immunoglobulin receptor, also known as PIGR, is a member of the immunoglobulin superfamily and a Fc receptor. The ectodomain of this receptor consists of five units with homology to the variable units of immunoglobulins and a transmembrane region, which also has some homology to certain immunoglobulin variable regions. PIGR is expressed on several glandular epithelia including those of liver and breast. The deduced amino-acid sequence has a length of 764 residues and shows an overall similarity of 56% and 64% with the rabbit and rat counterpart. PIGR mediates transcellular transport of polymeric immunoglobulin molecules, and thus facilitates the secretion of IgA and IgM. During this process, a cleavage occurs that separates the extracellular (known as the secretory component) from the transmembrane segment of PIGR.

### For Research Use Only