

CERS4 Polyclonal Antibody

catalog number: E-AB-13375

Note: Centrifuge before opening to ensure complete recovery of vial contents.

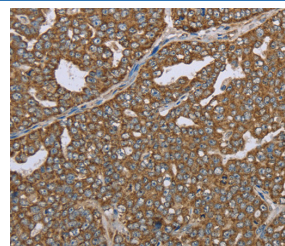
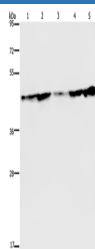
Description

Reactivity	Human
Immunogen	Synthetic peptide of human CERS4
Host	Rabbit
Isotype	IgG
Purification	Affinity purification
Buffer	Phosphate buffered solution, pH 7.4, containing 0.05% stabilizer and 50% glycerol.

Applications Recommended Dilution

WB	1:500-1:2000
IHC	1:50-1:200

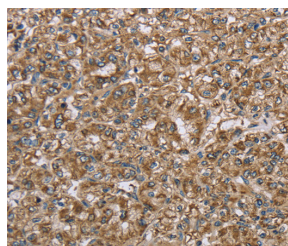
Data



Western Blot analysis of Human fetal liver tissue, HT-29 and HUVEC cell, MCF-7 cell and Human hepatocellular carcinoma tissue using CERS4 Polyclonal Antibody at dilution of 1:300

Immunohistochemistry of paraffin-embedded Human ovarian cancer using CERS4 Polyclonal Antibody at dilution of 1:35

Calculated-MW:46 kDa



Immunohistochemistry of paraffin-embedded Human prostate cancer using CERS4 Polyclonal Antibody at dilution of 1:35

Preparation & Storage

Storage	Store at -20°C Valid for 12 months. Avoid freeze / thaw cycles.
Shipping	The product is shipped with ice pack, upon receipt, store it immediately at the temperature recommended.

Background

For Research Use Only

The LASS (longevity assurance homolog) family members are highly conserved from yeasts to mammals. Six members of this family of proteins have been characterized (LASS1, LASS2, LASS3, LASS4, LASS5 and LASS6) and they are all involved in sphingolipid synthesis. LASS4 is a 394 amino acid endoplasmic reticulum, multi-pass membrane protein. LASS4 increases the levels of long ceramides such as C22:0- and C24:0-ceramides. In cells deficient for CLN9, as observed in neuronal ceroid lipofuscinosis (NCL) or Batten disease, LASS4 can increase ceramide levels and partially correct growth and apoptosis.

For Research Use Only

Toll-free: 1-888-852-8623
Web: www.elabscience.com

Tel: 1-832-243-6086
Email: techsupport@elabscience.com

Fax: 1-832-243-6017

Rev. V1.7