

STX16 Polyclonal Antibody

catalog number: **E-AB-15431**

Note: Centrifuge before opening to ensure complete recovery of vial contents.

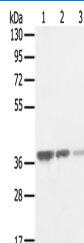
Description

Reactivity	Human;Mouse
Immunogen	Recombinant protein of human STX16
Host	Rabbit
Isotype	IgG
Purification	Affinity purification
Buffer	Phosphate buffered solution, pH 7.4, containing 0.05% stabilizer and 50% glycerol.

Applications

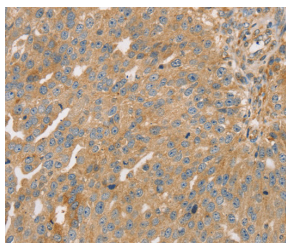
Applications	Recommended Dilution
WB	1:500-1:2000
IHC	1:25-1:100

Data

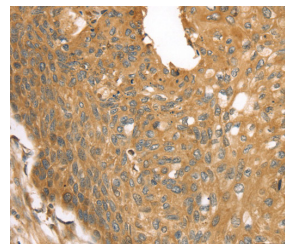


Western Blot analysis of MCF7, A172 and hepg2 cell using STX16 Polyclonal Antibody at dilution of 1:400

Calculated-MW:37 kDa



Immunohistochemistry of paraffin-embedded Human breast cancer using STX16 Polyclonal Antibody at dilution of 1:30



Immunohistochemistry of paraffin-embedded Human esophagus cancer using STX16 Polyclonal Antibody at dilution of 1:30

Preparation & Storage

Storage	Store at -20°C Valid for 12 months. Avoid freeze / thaw cycles.
Shipping	The product is shipped with ice pack, upon receipt, store it immediately at the temperature recommended.

Background

This gene encodes a protein that is a member of the syntaxin or t-SNARE (target-SNAP receptor) family. These proteins are found on cell membranes and serve as the targets for V-SNARES (vesicle-SNAP receptors) permitting specific synaptic vesicle docking and fusion. A microdeletion in the region of chromosome 20 where this gene is located has been associated with pseudohypoparathyroidism type 1b.

For Research Use Only