

## Recombinant Human ACE2 Protein (mFc Tag)

Catalog Number: PKSR030494

**Note:** Centrifuge before opening to ensure complete recovery of vial contents.

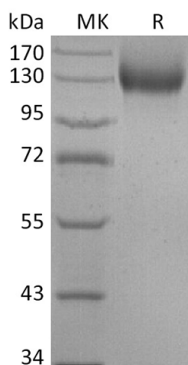
### Description

|                      |   |
|----------------------|---|
| <b>Species</b>       | Human   |
| <b>Source</b>        | HEK293 Cells-derived Human ACE2 protein Gln18-Ser740, with an C-terminal mFc  |
| <b>Calculated MW</b> | 110 kDa   |
| <b>Observed MW</b>   | 110-140 kDa   |
| <b>Accession</b>     | Q9BYF1  |
| <b>Bio-activity</b>  | Immobilized 2019-nCoV S1 Protein-Fc(Cat#PKSR030480) at 10µg/ml (100 µl/well) can bind Human ACE-2-mFc(Cat#PKSR030494). The ED <sub>50</sub> of Recombinant Human ACE-2-mFc(Cat#PKSR030494) is 0.58 ug/ml. |

### Properties

|                      |   |
|----------------------|---|
| <b>Purity</b>        | > 95 % as determined by reducing SDS-PAGE.  |
| <b>Concentration</b> | Subject to label value.   |
| <b>Endotoxin</b>     | < 1.0 EU per µg of the protein as determined by the LAL method.   |
| <b>Storage</b>       | Store at < -20°C, stable for 6 months. Please minimize freeze-thaw cycles.  |
| <b>Shipping</b>      | This product is provided as liquid. It is shipped at frozen temperature with blue ice/ gel packs. Upon receipt, store it immediately at < - 20°C. |
| <b>Formulation</b>   | Supplied as a 0.2 µm filtered solution of 20mM Tris-HCl, 300mM NaCl, 1mM ZnCl <sub>2</sub> , 10% Glycerol, pH 7.4.                                |

### Data



> 95 % as determined by reducing SDS-PAGE.

### Background

Angiotensin-Converting Enzyme 2 (ACE-2) is an integral membrane protein and a zinc metalloprotease of the ACE family, the ACE family includes somatic and germinal ACE. ACE-2 cleaves angiotensins I and II as a carboxypeptidase, ACE-2 converts angiotensin I to angiotensin 1-9, and angiotensin II to angiotensin 1-7. ACE-2 is also able to hydrolyze apelin-13 and dynorphin-13 with high efficiency. ACE-2 can be high expressed in testis, kidney and heart, in colon, small intestine and ovary at moderate levels. Captopril and lisinopril as the classical ACE inhibitor don't inhibit ACE-2 activity. ACE-2 may play an important role in regulating the heart function.

### For Research Use Only

Toll-free: 1-888-852-8623  
Web: [www.elabscience.com](http://www.elabscience.com)

Tel: 1-832-243-6086  
Email: [techsupport@elabscience.com](mailto:techsupport@elabscience.com)

Fax: 1-832-243-6017