

Elab Fluor® 700 Anti-Mouse IFN-γ Antibody[XMG1.2]

Catalog Number: E-AB-F1101UM1

Note: Centrifuge before opening to ensure complete recovery of vial contents.

Description

Reactivity	Mouse
Host	Rat
Isotype	Rat IgG1, κ
Clone No.	XMG1.2
Isotype Control	Elab Fluor® 700 Rat IgG1, κ Isotype Control[HRPN] [Product E-AB-F09823M1]
Conjugation	Elab Fluor® 700
Conjugation Information	Elab Fluor® 700 is designed to be excited by the Red laser (627-640 nm) and detected using an optical filter centered near 719 nm (e.g., a 725/40 nm bandpass filter).
Storage Buffer	Phosphate buffered solution, pH 7.2, containing 0.09% sodium azide and 1% BSA.

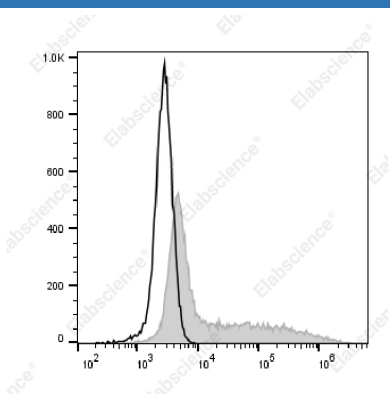
Applications

Recommended usage

FCM

Each lot of this antibody is quality control tested by flow cytometric analysis. Please check your vial before the experiment. Since applications vary, the appropriate dilutions must be determined for individual use. We suggest each investigator should titrate the reagent to obtain optimal results [The recommended concentration is 0.1-1 µg/10⁶ cells in 100 µL volume].

Data



Intracellular staining of the 293T cells transfected with pcDNA3.1 plasmid encoding Mouse IFN-γ gene with Elab

Fluor® 700 Anti-Mouse IFN-γ Antibody[XMG1.2](filled gray histogram) or Elab Fluor® 700 Rat IgG1, κ Isotype Control(empty black histogram). Total viable cells were used for analysis.

Preparation & Storage

Storage	Keep as concentrated solution. This product can be stored at 2-8°C for 12 months. Please protected from prolonged exposure to light and do not freeze.
Shipping	Ice bag

Antigen Information

Alternate Names	IFN-gamma;IFNγ;Ifnγ;Interferon gamma
Uniprot ID	P01580

For Research Use Only

Gene ID

15978

Background

IFN- γ is a potent multifunctional cytokine which is secreted primarily by activated NK cells and T cells. Originally characterized based on anti-viral activities, IFN- γ also exerts anti-proliferative, immunoregulatory, and proinflammatory activities. IFN- γ can upregulate MHC class I and II antigen expression by antigen-presenting cells.