

## SLC6A3 Polyclonal Antibody

catalog number: E-AB-12361

**Note:** Centrifuge before opening to ensure complete recovery of vial contents.

### Description

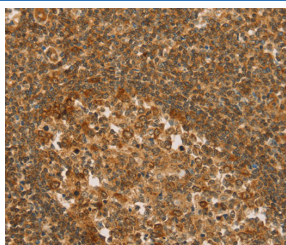
<b>Reactivity</b>	Human;Mouse;Rat
<b>Immunogen</b>	Synthetic peptide of human SLC6A3
<b>Host</b>	Rabbit
<b>Isotype</b>	IgG
<b>Purification</b>	Affinity purification
<b>Conjugation</b>	Unconjugated
<b>Buffer</b>	Phosphate buffered solution, pH 7.4, containing 0.05% stabilizer and 50% glycerol.

### Applications

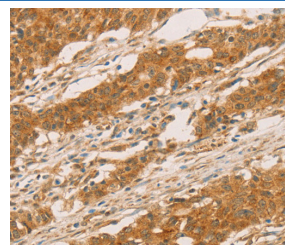
### Recommended Dilution

<b>IHC</b>	1:100-1:300
------------	-------------

### Data



Immunohistochemistry of paraffin-embedded Human tonsil tissue using SLC6A3 Polyclonal Antibody at dilution 1:50



Immunohistochemistry of paraffin-embedded Human gastric cancer tissue using SLC6A3 Polyclonal Antibody at dilution 1:50

### Preparation & Storage

<b>Storage</b>	Store at -20°C Valid for 12 months. Avoid freeze / thaw cycles.
<b>Shipping</b>	The product is shipped with ice pack, upon receipt, store it immediately at the temperature recommended.

### Background

This gene encodes a dopamine transporter which is a member of the sodium- and chloride-dependent neurotransmitter transporter family. The 3' UTR of this gene contains a 40 bp tandem repeat, referred to as a variable number tandem repeat or VNTR, which can be present in 3 to 11 copies. Variation in the number of repeats is associated with idiopathic epilepsy, attention-deficit hyperactivity disorder, dependence on alcohol and cocaine, susceptibility to Parkinson disease and protection against nicotine dependence.