

# AF/LE Purified Anti-Human CD11a Antibody[R7-1]

catalog number: E-AB-F12110

**Note:** Centrifuge before opening to ensure complete recovery of vial contents.

## Description

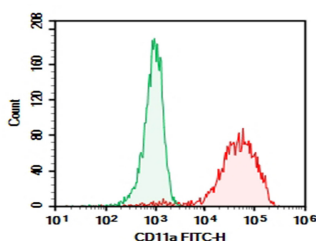
<b>Reactivity</b>	Human
<b>Host</b>	Mouse
<b>Isotype</b>	Mouse IgG1, $\kappa$
<b>Clone</b>	R7-1
<b>Conjugation</b>	None (AF/LE)
<b>buffer</b>	Sterile PBS, pH 7.2. < 1.0 EU per mg of the antibody as determined by the LAL method

## Applications

## Recommended Dilution

<b>FCM</b>	2 $\mu\text{g}/\text{mL}$ ( $1 \times 10^5$ - $5 \times 10^5$ cells)
------------	--

## Data



Human peripheral blood lymphocytes were stained with 0.2  $\mu\text{g}$  AF/LE Purified Anti-Human CD11a Antibody[R7-1] (Right) and 0.2  $\mu\text{g}$  Mouse IgG1,  $\kappa$  Isotype Control (Left), followed by FITC-conjugated Goat Anti-Mouse IgG Secondary Antibody.

## Preparation & Storage

**Storage** Store at 4°C valid for 12 months or -20°C valid for long term storage, avoid freeze / thaw cycles. This preparation contains no preservatives, thus it should be handled under aseptic conditions.

**Shipping** Ice bag

## Background

CD11a is a 170-180 kD type I transmembrane glycoprotein also known as LFA-1 $\alpha$  chain and integrin  $\alpha\text{L}$  subunit. CD11a non-covalently associates with integrin  $\beta\text{2}$  (CD18) to form LFA-1. It is expressed on all leukocytes, including B and T lymphocytes, monocytes, macrophages, neutrophils, basophils and eosinophils. It is absent on non-hematopoietic tissues and platelets. CD11a plays a central role in leukocyte cell-cell interactions and is important in lymphocyte costimulation. CD11a/CD18 binds to ICAM-1 (CD54), ICAM-2 (CD102), and ICAM-3 (CD50).

## For Research Use Only