

## WFDC2 Polyclonal Antibody

catalog number: **E-AB-68394**

**Note:** Centrifuge before opening to ensure complete recovery of vial contents.

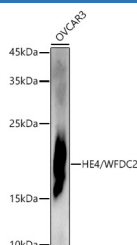
### Description

<b>Reactivity</b>	Human;Mouse;Rat
<b>Immunogen</b>	Recombinant fusion protein of human WFDC2
<b>Host</b>	Rabbit
<b>Isotype</b>	IgG
<b>Purification</b>	Affinity purification
<b>Buffer</b>	Phosphate buffered solution, pH 7.4, containing 0.05% stabilizer and 50% glycerol.

### Applications

Applications	Recommended Dilution
<b>WB</b>	1:500-1:2000
<b>IF</b>	1:50-1:200

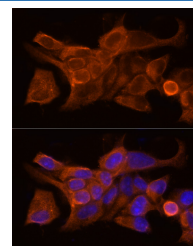
### Data



Western blot analysis of extracts of OVCAR3 cells using HE4/WFDC2 Polyclonal Antibody at 1:1000 dilution.

**Observed-MV:20 kDa**

**Calculated-MV:8 kDa/11 kDa/12 kDa**



Immunofluorescence analysis of MCF7 cells using HE4/WFDC2 Polyclonal Antibody at dilution of 1:50 (40x lens). Blue: DAPI for nuclear staining.

### Preparation & Storage

<b>Storage</b>	Store at -20°C Valid for 12 months. Avoid freeze / thaw cycles.
<b>Shipping</b>	The product is shipped with ice pack, upon receipt, store it immediately at the temperature recommended.

### Background

This gene encodes a protein that is a member of the WFDC domain family. The WFDC domain, or WAP Signature motif, contains eight cysteines forming four disulfide bonds at the core of the protein, and functions as a protease inhibitor in many family members. This gene is expressed in pulmonary epithelial cells, and was also found to be expressed in some ovarian cancers. The encoded protein is a small secretory protein, which may be involved in sperm maturation.

### For Research Use Only