

## Recombinant Human UBE2Z Protein (His Tag)

**Catalog Number:** PKSH033192

**Note:** Centrifuge before opening to ensure complete recovery of vial contents.

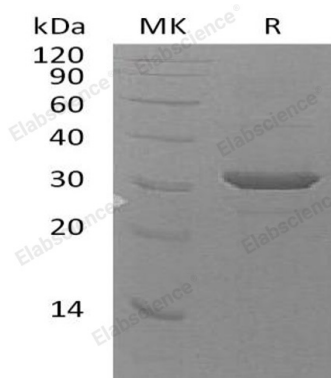
### Description

<b>Species</b>	Human
<b>Source</b>	E.coli-derived Human UBE2Z protein Met 1-Val246, with an N-terminal His
<b>Calculated MW</b>	30.2 kDa
<b>Observed MW</b>	32 kDa
<b>Accession</b>	Q9H832-2
<b>Bio-activity</b>	Not validated for activity

### Properties

<b>Purity</b>	> 90 % as determined by reducing SDS-PAGE.
<b>Concentration</b>	Subject to label value.
<b>Endotoxin</b>	< 1.0 EU per µg of the protein as determined by the LAL method.
<b>Storage</b>	Store at < -20°C, stable for 6 months. Please minimize freeze-thaw cycles.
<b>Shipping</b>	This product is provided as liquid. It is shipped at frozen temperature with blue ice/gel packs. Upon receipt, store it immediately at < - 20°C.
<b>Formulation</b>	Supplied as a 0.2 µm filtered solution of 50mM HEPES, 50mM NaCl, pH 8.0.

### Data



> 90 % as determined by reducing SDS-PAGE.

### Background

Ubiquitin-Conjugating Enzyme E2 Z (ZUBE2Z) is a member of the E2 ubiquitin-conjugating enzyme family. ZUBE2Z is widely expressed in many tissues, with high expression found in the placenta, pancreas, spleen, and testis. It is ubiquitinates proteins that catalyze the covalent attachment of ubiquitin to other proteins. It has shown that ZUBE2Z participate in signaling pathways, and may be involved in apoptosis regulation.