

# Recombinant Human IL-13 protein (SUMO,His Tag)

Catalog Number: PDEH100844



**Note:** Centrifuge before opening to ensure complete recovery of vial contents.

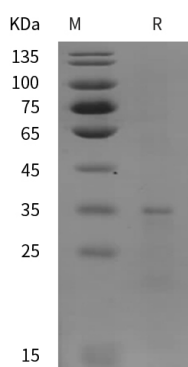
## Description

<b>Species</b>	Human
<b>Mol_Mass</b>	33.3 kDa
<b>Accession</b>	P35225
<b>Bio-activity</b>	Not validated for activity

## Properties

<b>Purity</b>	> 95% as determined by reducing SDS-PAGE.
<b>Endotoxin</b>	< 10 EU/mg of the protein as determined by the LAL method
<b>Storage</b>	Generally, lyophilized proteins are stable for up to 12 months when stored at -20 to -80 °C. Reconstituted protein solution can be stored at 4-8°C for 2-7 days. Aliquots of reconstituted samples are stable at < -20°C for 3 months.
<b>Shipping</b>	This product is provided as lyophilized powder which is shipped with ice packs.
<b>Formulation</b>	Lyophilized from a 0.2 µm filtered solution in PBS with 5% Trehalose and 5% Mannitol.
<b>Reconstitution</b>	It is recommended that sterile water be added to the vial to prepare a stock solution of 0.5 mg/mL. Concentration is measured by UV-Vis.

## Data



> 95 % as determined by reducing SDS-PAGE.

## Background

Interleukin 13 (IL-13) is a single-chain glycosylated polypeptide, which belongs to the IL-13/IL-4 family. IL-13 protein is secreted by many cell types, but especially by T helper type 2 (Th2) cells. IL-13 exerts its effects through a multi-subunit receptor comprising the alpha chain of the IL-4 receptor (IL-4R $\alpha$ ), and at least one of two known IL-13-specific binding chains (IL-13 R $\alpha$ 1 and IL-13 R $\alpha$ 2). As a cytokine, IL-13 protein is critical in regulating inflammatory, immune responses and diseases. In addition, it inhibits the production of pro-inflammatory cytokines and chemokines, and thus down-regulates macrophage activity. IL-13 protein and antibody is more importantly implicated as a central mediator of immunoregulatory processes in various cell types.

## For Research Use Only

A Reliable Research Partner in Life Science and Medicine  
Tel:400-999-2100

Email:[techsupport@elabscience.cn](mailto:techsupport@elabscience.cn)

Web:[www.elabscience.cn](http://www.elabscience.cn)

Rev. V1.2