

ALYREF Polyclonal Antibody

catalog number: **E-AB-62334**

Note: Centrifuge before opening to ensure complete recovery of vial contents.

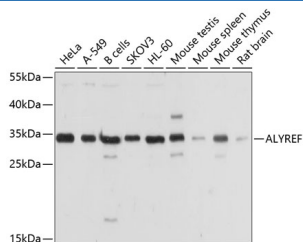
Description

Reactivity	Human;Mouse;Rat
Immunogen	Recombinant protein of human ALYREF
Host	Rabbit
Isotype	IgG
Purification	Affinity purification
Buffer	Phosphate buffered solution, pH 7.4, containing 0.05% stabilizer and 50% glycerol.

Applications

Applications	Recommended Dilution
WB	1:500-1:2000
IHC	1:50-1:200
IF	1:50-1:200

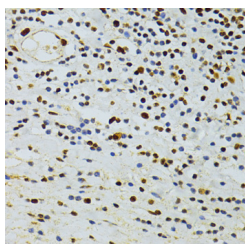
Data



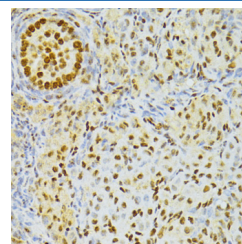
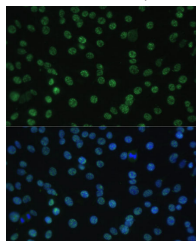
Western blot analysis of extracts of various cell lines using ALYREF Polyclonal Antibody at dilution of 1:1000.

Observed-MW:30 kDa

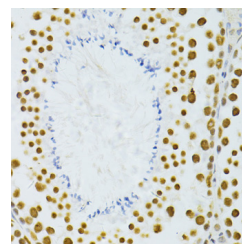
Calculated-MW:26 kDa



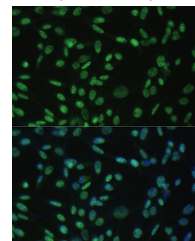
Immunohistochemistry of paraffin-embedded Human vermiform appendix using ALYREF Polyclonal Antibody at dilution of 1:100 (40x lens).



Immunohistochemistry of paraffin-embedded Rat ovary using ALYREF Polyclonal Antibody at dilution of 1:100 (40x lens).

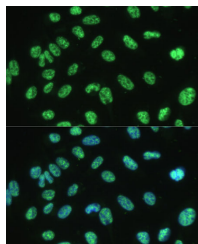


Immunohistochemistry of paraffin-embedded Mouse testis using ALYREF Polyclonal Antibody at dilution of 1:100 (40x lens).

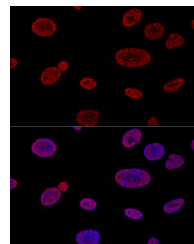


For Research Use Only

Immunofluorescence analysis of C6 cells using ALYREF Polyclonal Antibody at dilution of 1:100 (40x lens). Blue: DAPI for nuclear staining.



Immunofluorescence analysis of NIH-3T3 cells using ALYREF Polyclonal Antibody at dilution of 1:100 (40x lens). Blue: DAPI for nuclear staining.



Immunofluorescence analysis of U-2 OS cells using ALYREF Polyclonal Antibody at dilution of 1:100 (40x lens). Blue: DAPI for nuclear staining.

Confocal immunofluorescence analysis of U2OS cells using ALYREF Polyclonal Antibody at dilution of 1:100. Blue: DAPI for nuclear staining.

Preparation & Storage

Storage

Store at -20°C Valid for 12 months. Avoid freeze / thaw cycles.

Shipping

The product is shipped with ice pack, upon receipt, store it immediately at the temperature recommended.

Background

The protein encoded by this gene is a heat stable, nuclear protein and functions as a molecular chaperone. It is thought to regulate dimerization, DNA binding, and transcriptional activity of basic region-leucine zipper (bZIP) proteins.

For Research Use Only