

CD177 Polyclonal Antibody

Catalog Number: E-AB-70185



Note: Centrifuge before opening to ensure complete recovery of vial contents.

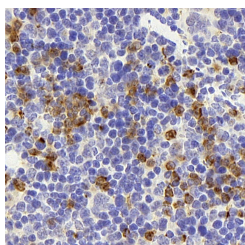
Description

Reactivity	Mouse, Rat
Immunogen	KLH conjugated Synthetic peptide corresponding to Mouse CD177
Host	Rabbit
Isotype	IgG
Purification	Affinity purification
Conjugation	Unconjugated
Formulation	PBS with 0.02% sodium azide, 1% protective protein and 50% glycerol, pH7.4

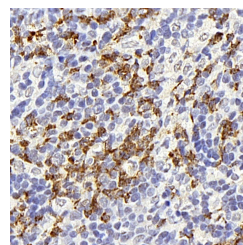
Applications Recommended Dilution

IHC	1:200-1:800
------------	-------------

Data



Immunohistochemistry analysis of paraffin-embedded mouse spleen using CD177 Polyclonal Antibody at dilution of 1:300.



Immunohistochemistry analysis of paraffin-embedded rat thymus gland using CD177 Polyclonal Antibody at dilution of 1:300.

Preparation & Storage

Storage Store at -20°C. Avoid freeze / thaw cycles.

Background

NB1, a glycosyl-phosphatidylinositol (GPI)-linked N-glycosylated cell surface glycoprotein, was first described in a case of neonatal alloimmune neutropenia. Highly expressed in normal bone marrow and weakly expressed in fetal liver. Expressed on neutrophils. Expressed in granulocytes of patients with polycythemia vera (PV) and with essential thrombocythemia (ET).

For Research Use Only

A Reliable Research Partner in Life Science and Medicine

Toll-free: 1-888-852-8623

Web: www.elabscience.com

Tel: 1-832-243-6086

Email: techsupport@elabscience.com

Fax: 1-832-243-6017