

## Elab Fluor® 488 Anti-Mouse CD11a Antibody[I21/7]

Catalog Number: AN00573L

**Note:** Centrifuge before opening to ensure complete recovery of vial contents.

### Description

<b>Reactivity</b>	Mouse
<b>Host</b>	Rat
<b>Isotype</b>	Rat IgG2a, κ
<b>Clone No.</b>	I21/7
<b>Isotype Control</b>	Elab Fluor® 488 Rat IgG2a, κ Isotype Control[I2A3] [Product E-AB-F09832L]
<b>Conjugation</b>	Elab Fluor® 488
<b>Conjugation Information</b>	Elab Fluor® 488 is designed to be excited by the Blue laser (488 nm) and detected using an optical filter centered near 520 nm (e.g., a 525/40 nm bandpass filter).
<b>Storage Buffer</b>	Phosphate buffered solution, pH 7.2, containing 0.09% sodium azide and 1% BSA.

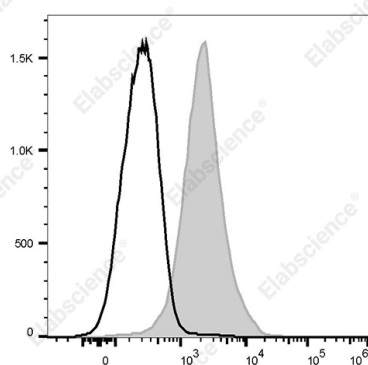
### Applications

### Recommended usage

#### FCM

Each lot of this antibody is quality control tested by flow cytometric analysis. **The amount of the reagent is suggested to be used 5 μL of antibody per test (million cells in 100 μL staining volume or per 100 μL of whole blood).** Please check your vial before the experiment. Since applications vary, the appropriate dilutions must be determined for individual use.

### Data



Staining of C57BL/6 murine splenocytes cells with Elab Fluor

® 488 Anti-Mouse CD11a Antibody[I21/7] (filled gray

histogram) or Elab Fluor® 488 Rat IgG2a, κ Isotype Control (empty black histogram). Total viable cells were used for analysis.

### Preparation & Storage

#### Storage

Keep as concentrated solution.

This product can be stored at 2-8°C for 12 months. Please protected from prolonged exposure to light and do not freeze.

#### Shipping

Ice bag

### Antigen Information

#### Alternate Names

Myeloid cell surface antigen CD33;CD33;Sialic acid-binding Ig-like lectin 3;Siglec-3;gp67;SIGLEC3

#### Uniprot ID

P20138

### For Research Use Only

**Gene ID**

16408

**Background**

CD11a is a 180 kD glycoprotein, also known as  $\alpha$ L integrin, LFA-1  $\alpha$ , Ly-15, or Ly-21. It is a member of the integrin family, primarily expressed on lymphocytes, monocytes/macrophages, and granulocytes. In association with CD18, the CD11a/CD18 complex forms LFA-1. CD11a plays an important role in intercellular adhesion and costimulation by binding its ligands, ICAM-1 (CD54), ICAM-2 (CD102), and ICAM-3 (CD50).