

## Recombinant Human Leukocyte Ig-Like Receptor B1/ LILRB1/ILT2/CD85j (C-Fc)

**Catalog Number: PKSH033978**

**Note:** *Centrifuge before opening to ensure complete recovery of vial contents.*

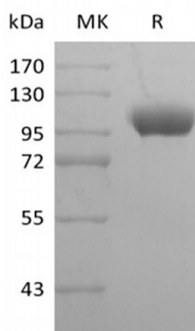
### Description

<b>Species</b>	Human
<b>Source</b>	HEK293 Cells-derived Human LILRB1;ILT2;CD85j protein Gly24-His458, with an C-terminal Fc
<b>Calculated MW</b>	74.1 kDa
<b>Observed MW</b>	100-120 kDa
<b>Accession</b>	D9IDM8
<b>Bio-activity</b>	Not validated for activity

### Properties

<b>Purity</b>	> 95 % as determined by reducing SDS-PAGE.
<b>Endotoxin</b>	< 1.0 EU per µg of the protein as determined by the LAL method.
<b>Storage</b>	Generally, lyophilized proteins are stable for up to 12 months when stored at -20 to -80°C. Reconstituted protein solution can be stored at 4-8°C for 2-7 days. Aliquots of reconstituted samples are stable at < -20°C for 3 months.
<b>Shipping</b>	This product is provided as lyophilized powder which is shipped with ice packs.
<b>Formulation</b>	Lyophilized from a 0.2 µm filtered solution of PBS, pH 7.4. Normally 5% - 8% trehalose, mannitol and 0.01% Tween 80 are added as protectants before lyophilization. Please refer to the specific buffer information in the printed manual.
<b>Reconstitution</b>	Please refer to the printed manual for detailed information.

### Data



> 95 % as determined by reducing SDS-PAGE.

### Background

The immunoglobulin-like transcript (ILT) family (also named leukocyte Ig-like receptors (LIR) and monocyte/macrophage Ig-like receptors (MIR)) can be activating and inhibitory immunoreceptors. ILTs are expressed on many leukocyte subsets and regulators of immune responses. ILTs share significant homology with killer cell Ig-like receptors (KIR). Except ILT-6, all ILT family members are type I transmembrane proteins having two or four extracellular Ig-like domains. ILT2 is expressed on most monocytes, dendritic cells, and mature B cells. ILT2 is also expressed on small percentages of T-cells and NK cells. ILT2 can prevent cellular activation.

### For Research Use Only

Toll-free: 1-888-852-8623  
Web: [www.elabscience.com](http://www.elabscience.com)

Tel: 1-832-243-6086  
Email: [techsupport@elabscience.com](mailto:techsupport@elabscience.com)

Fax: 1-832-243-6017