

# ATAD5 Polyclonal Antibody

catalog number: E-AB-16267

**Note:** Centrifuge before opening to ensure complete recovery of vial contents.

## Description

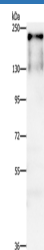
|                     |  |
|---------------------|--|
| <b>Reactivity</b>   | Human  |
| <b>Immunogen</b>    | Synthetic peptide of human ATAD5   |
| <b>Host</b>         | Rabbit   |
| <b>Isotype</b>      | IgG  |
| <b>Purification</b> | Affinity purification  |
| <b>Conjugation</b>  | Unconjugated   |
| <b>buffer</b>       | Phosphate buffered solution, pH 7.4, containing 0.05% stabilizer and 50% glycerol. |

## Applications

## Recommended Dilution

|           |              |
|-----------|--------------|
| <b>WB</b> | 1:200-1:1000 |
|-----------|--------------|

## Data



Western Blot analysis of A431 cell using ATAD5 Polyclonal

Antibody at dilution of 1:750

**Calculated-MV:207 kDa**

## Preparation & Storage

|                 |  |
|-----------------|--|
| <b>Storage</b>  | Store at -20°C Valid for 12 months. Avoid freeze / thaw cycles.  |
| <b>Shipping</b> | The product is shipped with ice pack, upon receipt, store it immediately at the temperature recommended. |

## Background

ATAD5 (ATPase family, AAA domain containing 5), also known as chromosome fragility-associated gene 1 protein, FRAG1 or ELG1, is a 1,844 amino acid nuclear protein that is involved in the DNA damage response and belongs to the AAA ATPase family. Existing as two alternatively spliced isoforms, ATAD5 interacts with Rad9 in growing cells where it assists in interactions between Rad9 and Bcl-2.

## For Research Use Only