

Recombinant Human GGACT Protein (His Tag)

Catalog Number: PKSH033272

Note: Centrifuge before opening to ensure complete recovery of vial contents.

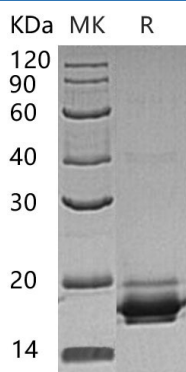
Description

Species	Human
Source	E.coli-derived Human GGACT protein Met 1-Arg153, with an N-terminal His
Calculated MW	19.5 kDa
Observed MW	18 kDa
Accession	Q9BVM4
Bio-activity	Not validated for activity

Properties

Purity	> 95 % as determined by reducing SDS-PAGE.
Concentration	Subject to label value.
Endotoxin	< 1.0 EU per µg of the protein as determined by the LAL method.
Storage	Store at < -20°C, stable for 6 months. Please minimize freeze-thaw cycles.
Shipping	This product is provided as liquid. It is shipped at frozen temperature with blue ice/gel packs. Upon receipt, store it immediately at < -20°C.
Formulation	Supplied as a 0.2 µm filtered solution of 20mM Tris-HCl, 100mM NaCl, 10% Glycerol, pH 8.0.

Data



> 95 % as determined by reducing SDS-PAGE.

Background

Gamma-Glutamylaminocyclotransferase is an enzyme that converts gamma-glutamylamines to free amines and 5-oxoproline which belongs to the gamma-glutamylcyclotransferase family. It shows high activity toward gamma-glutamyl-epsilon-lysine, derived from the breakdown of fibrin and contributes to degradation of proteins cross-linked by transglutaminases. It degrades the cross-link between a lysine and a glutamic acid residue from two proteins that have been cross-linked by transglutaminases. This protein adopts the newly identified cyclotransferase fold, observed in Gamma-Glutamylcyclotransferase, an enzyme with activity toward gamma-glutamyl-alpha-amino acids.

For Research Use Only

Toll-free: 1-888-852-8623
Web: www.elabscience.com

Tel: 1-832-243-6086
Email: techsupport@elabscience.com

Fax: 1-832-243-6017