

Recombinant Human Histone H4/HIST2H4A Protein

Catalog Number: PKSH031359

Note: *Centrifuge before opening to ensure complete recovery of vial contents.*

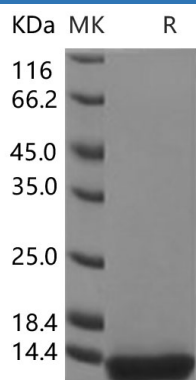
Description

Species	Human
Source	E.coli-derived Human Histone H4/HIST2H4A protein Met 1-Gly103
Calculated MW	11.4 kDa
Observed MW	12 kDa
Accession	NP_003539.1
Bio-activity	Not validated for activity

Properties

Purity	> 95 % as determined by reducing SDS-PAGE.
Endotoxin	Please contact us for more information.
Storage	Generally, lyophilized proteins are stable for up to 12 months when stored at -20 to -80°C. Reconstituted protein solution can be stored at 4-8°C for 2-7 days. Aliquots of reconstituted samples are stable at < -20°C for 3 months.
Shipping	This product is provided as lyophilized powder which is shipped with ice packs.
Formulation	Lyophilized from sterile 2 mM β-ME in dd H ₂ O, pH 6.0 Normally 5% - 8% trehalose, mannitol and 0.01% Tween 80 are added as protectants before lyophilization. Please refer to the specific buffer information in the printed manual.
Reconstitution	Please refer to the printed manual for detailed information.

Data



> 95 % as determined by reducing SDS-PAGE.

Background

Cyclin E1 is a member of the highly conserved cyclin family and belongs to the E-type cyclin that functions as a regulator of S phase entry and progression in mammalian cells. Cyclin E1 serves as regulatory subunits that bind, activate, and provide substrate for its associated cyclin-dependent kinase2 (CDK2), whose activity is essential for cell cycle G1 / S transition. Over expression of this encoding gene has been found in many tumors, which results in chromosome instability and by extension, induce tumorigenesis. This protein was also found to associate with, and be involved in, the phosphorylation of NPAT protein (nuclear protein mapped to the ATM locus), which participates in cell-cycle regulated histone gene expression and plays a critical role in promoting cell-cycle progression in the absence of pRB. In general, cyclin E1, as an activator of phospho-CDK2 (pCDK2), is important for cell cycle progression and is frequently overexpressed in cancer cells.

For Research Use Only

Toll-free: 1-888-852-8623
Web: www.elabscience.com

Tel: 1-832-243-6086
Email: techsupport@elabscience.com

Fax: 1-832-243-6017