

Recombinant Human Protocadherin-10/PCDH10 Protein (His Tag)



Catalog Number:PKSH032978

Note: Centrifuge before opening to ensure complete recovery of vial contents.

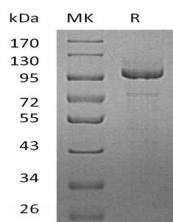
Description

| | |
|------------------------------------|----------------------------------|
| Synonyms | Protocadherin-10;PCDH10;KIAA1400 |
| Species | Human |
| Expression Host | HEK293 Cells |
| Sequence | Gln19-Thr715(Leu405Pro) |
| Accession | Q9P2E7 |
| Calculated Molecular Weight | 76.4 kDa |
| Observed molecular weight | 87 kDa |
| Tag | C-His |

Properties

| | |
|-----------------------|--|
| Purity | > 95 % as determined by reducing SDS-PAGE. |
| Endotoxin | < 1.0 EU per µg of the protein as determined by the LAL method. |
| Storage | Generally, lyophilized proteins are stable for up to 12 months when stored at -20 to -80°C. Reconstituted protein solution can be stored at 4-8°C for 2-7 days. Aliquots of reconstituted samples are stable at < -20°C for 3 months. |
| Shipping | This product is provided as lyophilized powder which is shipped with ice packs. |
| Formulation | Lyophilized from a 0.2 µm filtered solution of 20mM PB, 150mM NaCl, pH 7.4. Normally 5 % - 8 % trehalose, mannitol and 0.01% Tween80 are added as protectants before lyophilization. Please refer to the specific buffer information in the printed man |
| Reconstitution | Please refer to the printed manual for detailed information. |

Data



> 95 % as determined by reducing SDS-PAGE.

Background

Protocadherin-10 (PCDH10) is a single-pass type I membrane protein that contains six extracellular cadherin domains; one transmembrane domain and one cytoplasmic tail differing from those of the classical cadherins. As a potential calcium-dependent cell-adhesion neuronal receptor; it may play a role in the establishment and function of specific cell-cell connections in the brain. PCDH10 moderately expressed in all regions of the brain examined; as well as in testis and ovary; and low expression in all other tested tissues.

For Research Use Only

A Reliable Research Partner in Life Science and Medicine

Toll-free: 1-888-852-8623

Web: www.elabscience.com

Tel: 1-832-243-6086

Email: techsupport@elabscience.com

Fax: 1-832-243-6017