

# Recombinant Human CXCL3/GRO gamma Protein (His Tag)



Catalog Number: PKSH032300

**Note:** Centrifuge before opening to ensure complete recovery of vial contents.

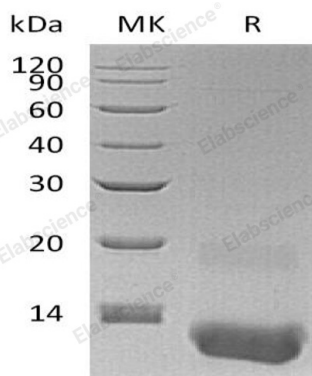
## Description

<b>Species</b>	Human
<b>Mol_Mass</b>	8.7 kDa
<b>Accession</b>	P19876
<b>Bio-activity</b>	Measure by its ability to chemoattract BaF3 cells transfected with human CXCR2. The ED <sub>50</sub> for this effect is <2 ng/mL.

## Properties

<b>Purity</b>	> 98 % as determined by reducing SDS-PAGE.
<b>Endotoxin</b>	< 0.1 EU per µg of the protein as determined by the LAL method.
<b>Storage</b>	Generally, lyophilized proteins are stable for up to 12 months when stored at -20 to -80 °C. Reconstituted protein solution can be stored at 4-8°C for 2-7 days. Aliquots of reconstituted samples are stable at < -20°C for 3 months.
<b>Shipping</b>	This product is provided as lyophilized powder which is shipped with ice packs.
<b>Formulation</b>	Lyophilized from sterile PBS, pH 7.4. Normally 5% - 8% trehalose, mannitol and 0.01% Tween 80 are added as protectants before lyophilization. Please refer to the specific buffer information in the printed manual.
<b>Reconstitution</b>	Please refer to the printed manual for detailed information.

## Data



> 98 % as determined by reducing SDS-PAGE.

## Background

C-X-C Motif Chemokine 3 (CXCL3) is a secreted protein that belongs to the intercrine alpha (chemokine CXC) family. CXCL3 controls the migration and adhesion of monocytes and mediates its effect on its target cell by interacting with a cell surface chemokine receptor called CXCR2. In addition, CXCL3 is thought to play a role in inflammation and exert its effects on endothelial cells in an autocrine fashion.

## For Research Use Only

A Reliable Research Partner in Life Science and Medicine  
Tel: 400-999-2100

Email: [techsupport@elabscience.cn](mailto:techsupport@elabscience.cn)

Web: [www.elabscience.cn](http://www.elabscience.cn)

Rev. V3.2