

Recombinant Human MAPK15 protein (His Tag)

Catalog Number: PDEH101045

Note: Centrifuge before opening to ensure complete recovery of vial contents.

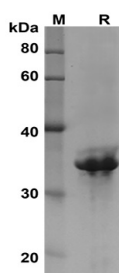
Description

Species	Human
Source	E.coli-derived Human MAPK15 protein Met1-Arg277, with an N-terminal His & C-terminal His
Calculated MW	30.4 kDa
Observed MW	35 kDa
Accession	Q8TD08-3
Bio-activity	Not validated for activity

Properties

Purity	> 90% as determined by reducing SDS-PAGE.
Endotoxin	< 10 EU/mg of the protein as determined by the LAL method
Storage	Generally, lyophilized proteins are stable for up to 12 months when stored at -20 to -80 °C. Reconstituted protein solution can be stored at 4-8°C for 2-7 days. Aliquots of reconstituted samples are stable at < -20°C for 3 months.
Shipping	This product is provided as lyophilized powder which is shipped with ice packs.
Formulation	Lyophilized from a 0.2 µm filtered solution in PBS with 5% Trehalose and 5% Mannitol.
Reconstitution	It is recommended that sterile water be added to the vial to prepare a stock solution of 0.5 mg/mL. Concentration is measured by UV-Vis.

Data



SDS-PAGE analysis of Human MAPK15 proteins, 2µg/lane of Recombinant Human MAPK15 proteins was resolved with SDS-PAGE under reducing conditions, showing bands at 35 KD.

Background

Widely expressed with a maximal expression in lung and kidney. In vitro, phosphorylates MBP.

For Research Use Only